

# Holstein Journal

AUSTRALIA

SUMMER 2023



**2023 On Farm  
Competitions**

**Adelaide Show  
results**

**Cow Family  
– Cuties**

LEAD INNOVATE DELIVER



The Good Judges Love 

# Jerónimo-P

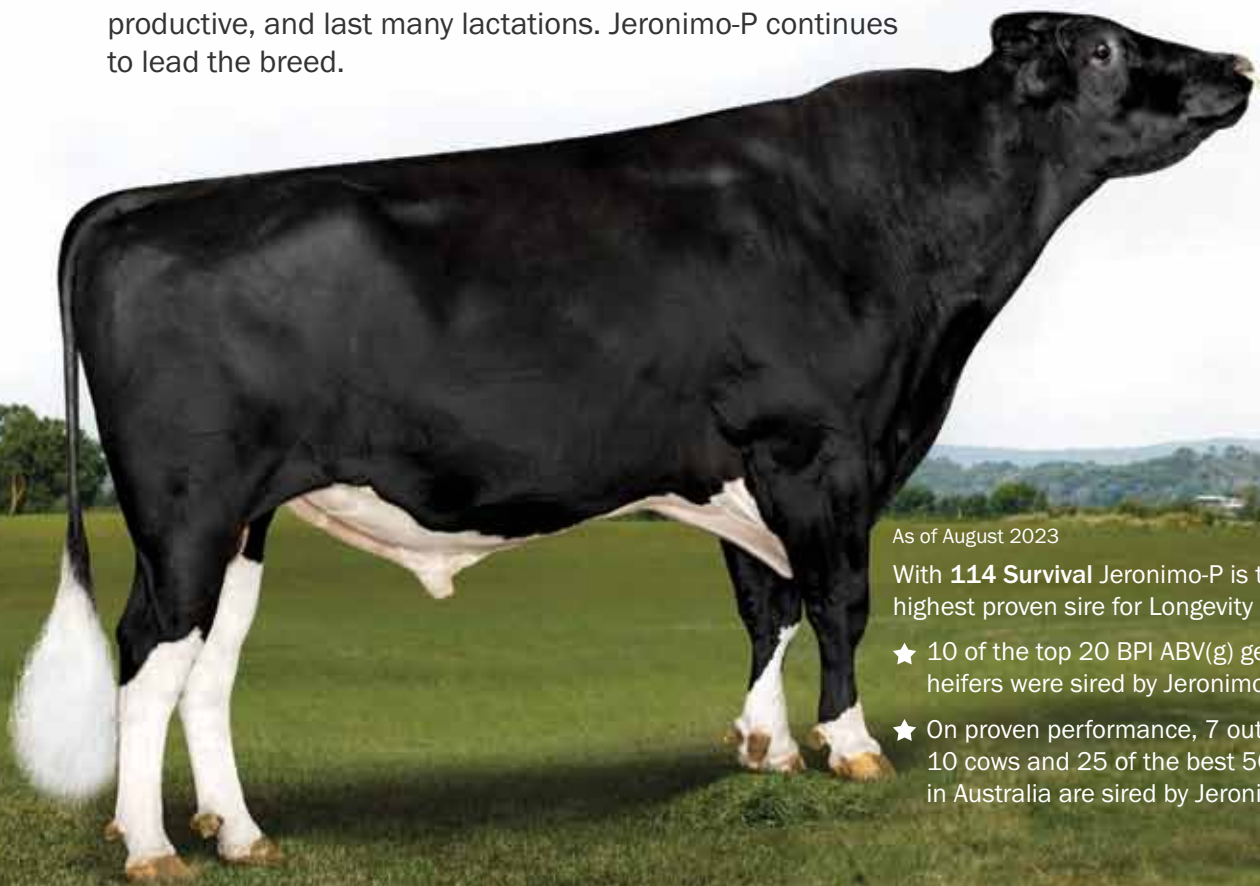
Now with over **800 milking daughters** ABS Jerónimo-P is **105 Farmer Likability**

He is our most popular re-use sire as farmers appreciate:

- ★ His outstanding calves
- ★ His daughters surpass all expectations when they come into milk
- ★ His daughters mature into ideal cows



There are some old-fashioned views that don't relate to the modern cow. Tomorrow's cow needs to be efficient, fertile, productive, and last many lactations. Jerónimo-P continues to lead the breed.



As of August 2023

With **114 Survival** Jerónimo-P is the breed's highest proven sire for Longevity

- ★ 10 of the top 20 BPI ABV(g) genetic merit heifers were sired by Jerónimo-P
- ★ On proven performance, 7 out of the top 10 cows and 25 of the best 50 BPI cows in Australia are sired by Jerónimo-P



Carenda Jerónimo Vida VG-87  
Owned by Kitchen Farms, WA

Current  
**#1**  
Genomic  
Cow

August 2023

**634**  
gBPI

1800 **ABS** BULL  
(1800 227 285)  
[www.absglobal.com/au](http://www.absglobal.com/au)





**Holstein**  
AUSTRALIA

# C o n t e n t s



**16** Royal Adelaide Show



**20** World Dairy Expo



**28** Cow Family

President’s Report.....	5
Highlights award recognises Hall’s service.....	6
Barclay Phoenix to judge IDW Holsteins .....	6
Long-term industry contribution rewarded .....	7
Say G’day to HYB’s Christie Baker .....	7
Members, youth are paramount issues for new HA President Gino Pacitti .....	8
Morgan boosts BDCC stocks.....	10
2023’s elite cows .....	11
Relationships between conformation and profitability .....	14
Show reports .....	16
Royal Adelaide .....	16
NSW State Show in Nowra .....	17
All-Australian Competition Update .....	19
Emmalea’s life-changing expo experience .....	20
Holstein Highlights: Getting together to celebrate .....	22
Biosecurity and sustainability: lessons from the UK dairy industry .....	24
Reflections on young breeders program.....	26
Cow family: The Cuties.....	28
On Farm Competition	
Queensland.....	32
South Australia .....	33
Western Australia .....	34
Victoria .....	35
New South Wales.....	36
Tasmania .....	37
Classification Tour results 21/08/2023 to 10/11/2023.....	38
Last Word: Holsteins tick the dairy beef boxes .....	42

The Australian Holstein Journal is the official publication of Holstein Australia Inc. Content is copyright and reproduction without permission of the publisher is forbidden. Opinions and views expressed or implied are not necessarily those of Holstein Australia or the publishers and responsibility for the validity or accuracy of any statement, and content of any advertisement, lies solely with the author or advertiser.

Re. No: A14883U ABN: 87 455 118 302

Holstein Australia Office: Ph: 03 9835 7600

[www.holstein.com.au](http://www.holstein.com.au)

Holstein Australia  
AgriBio, 5 Ring Road, Bundoora Victoria 3083

Produced by Monks Communication on behalf of Holstein Australia  
Editor: Lee-Ann Monks  
Layout: SUBStitution Pty Ltd  
Advertising: Amanda Glossop: 0409 926 429  
Printed by Litho Art, Darra, Qld

**COVER:** Shae Tweddle and the Adelaide Royal Champion and SA On Farm Challenge Champion, Benlargo Elijah Ding.  
*Photograph: Matilda Jones*





# PACE



250HO16497 SIEMERS CWAY PACE 36945-ET  
**CONWAY X ZASBERILLA X DELTA-LAMBDA**

**UDDERS** +2.39 PTAT | +2.28 UDC  
**INDEXES** +3154 TPI® | +1012 NMS | +1061 HHPS®  
**COMPONENTS** +0.14% +64 PTAP | +0.32% +119 PTAF  
**FERTILITY AND LONGEVITY** +0.3 DPR | +3.6 PL  
**TYPE** UNDER +2.00 STATURE | SLOPED RUMPS

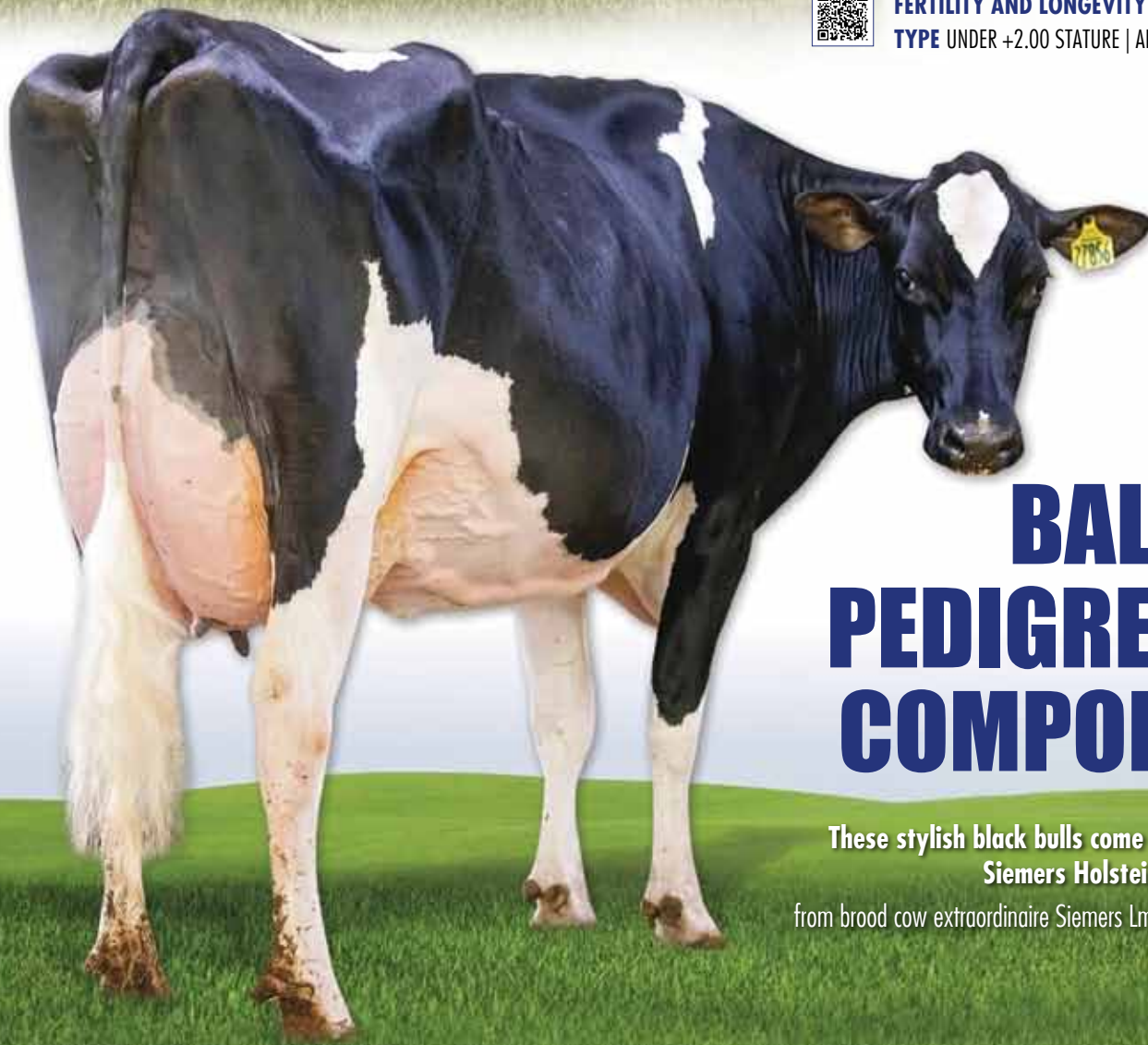


# PAZZLE



250HO16115 SIEMERS RZ PAZZLE 34954-ET  
**ROZLINE X DELTA-LAMBDA X DENVER**

**UDDERS** +3.23 PTAT | +2.99 UDC  
**INDEXES** +3053 TPI® | +1006 HHPS®  
**COMPONENTS** +0.09% +46 PTAP | +0.23% +89 PTAF  
**FERTILITY AND LONGEVITY** +0.7 DPR | +4.7 PL  
**TYPE** UNDER +2.00 STATURE | ADDS TEAT LENGTH



ABOVE: SIEMERS CWAY **PACE** 36945-ET  
 AND SIEMERS RZ **PAZZLE** 34954-ET  
 LEFT: SIEMERS LMDA PARIS 27856-ET  
 EX-91 DAM OF **PAZZLE**  
 AND MGD OF **PACE**

# TYPE, BALANCE, PEDIGREE AND COMPONENTS

These stylish black bulls come from the heart of the  
 Siemers Holstein breeding program –  
 from brood cow extraordinaire Siemers Lmda Paris 27856-ET EX-91.



HERE FOR YOU.

## WORLD WIDE SIRES

Phone (03) 5831 5559 • info@wwsaustralia.com  
 wwwaustralia.com



<sup>™</sup>GForce and <sup>™</sup>gender SELECTED are trademarks of Select Sires Inc. <sup>®</sup>HHPS is a registered trademark of Select Sires Inc. <sup>®</sup>TPI is a registered trademark of Holstein USA. 08/23 DCB and HA data. 250HO16497 Rel. Type 80%, Rel. Prod. 82%, Rel. DPR 76%, Rel. PL 76%; 250HO16115 Rel. Type 80%, Rel. Prod. 82%, Rel. DPR 75%, Rel. PL 76%.

# Product of the USA



## Investment in industry's future

Looking back over my first few months as President I'm pleased to report that the Association is making significant progress in a number of areas that the Board and management see as significant investments in HA's future, and that of the dairy industry.

### Youth collaboration

As dairy farmers we are continually investing in the future of our businesses. It's an unusual industry. Strictly speaking we are not competitors. We rely on each other for support and advice, particularly when times are tough. We share common experiences, common knowledge, and by doing so we all benefit.

This is the thought process behind a new Australian Dairy Youth initiative, which I am delighted to report has now come to fruition.

In May this year Jersey Australia and HA hosted a round table meeting with representatives of all dairy breed associations to discuss a proposal to develop an industry-wide all breeds approach to the creation, implementation and promotion of programs supporting Australian dairy youth.

Work has been going on in the background since then, resulting in the formation of the Australian Dairy Youth Association. Each breed association represented – Holstein Australia, Jersey Australia, Guernsey Australia, Illawarra Cattle Society of Australia, Brown Swiss and Aussie Reds – has made an initial three-year commitment, each has an equal voice at the table.

I believe this is a really significant step for our industry. An industry wide approach to creating opportunities for young people to develop their skills and putting in place national youth pathways is essential to grow our dairy communities and create a stronger dairy community now and into the future.

HA's Youth Committee is currently working

up program ideas and key areas of focus for our Australian Dairy Youth Association representative, Jacqui Soares, to take to the next meeting, with each association following a similar approach. I look forward to further news on this initiative early in 2024.

### Member Advisory Committee

Holstein Australia members have made an equally significant investment in the Association's future by supporting the formation of the Member Advisory Committee, with the first meeting held in November.

The new committee provides a forum for all members, through nominated sub branch representatives, to have direct input into the direction of the Association, its member activities, increasing the value of Holstein membership and ensuring feedback from members is appropriately addressed.

Following the Holstein AGM sub-branches were asked to nominate a Member Advisory Committee representative. Eleven sub-branches were represented at the first meeting. If your sub branch has not put a nominee forward, it is not too late. The wider the cross section of regions represented, the greater the number of members represented, the stronger this committee will be, the better our Association will be.

The Committee elected Brent Mitchell (North West Vic Sub branch / Mitch Holsteins) as Chair. A report on the first meeting will be prepared for sub branches, with the next meeting to be held in Melbourne in February.

### Expanded Board

As I write this report a call for Board nominations is underway to increase the number of elected member representatives serving on the Board to six.

Prior to the 2024 AGM the Board intends to fix the number of Directors (elected)

at seven and then call for nominations for another Board member in addition to those vacancies created by sitting director terms expiring, taking the Board of seven directors elected from the membership.

Members will know that following the 2023 AGM and original lack of nominations, the Board was required to operate with four directors, and immediately take steps to appoint another director.

Following several discussions with members, plus seeking appropriate legal and governance advice, the Board determined that any additional appointments should take place through the nomination and election process currently underway.

This has been a challenging period for the Association. However I am firmly of the belief that the steps taken are in the best interests of the Association, and of each and every member. The process has been very transparent, and once complete, will help ensure continuity, the required depth of director experience and stability for HA.

### Strong first quarter

Several live export orders, with a premium paid for registered animals, and good uptake of HA's recent Registration Round Up have provided a strong start to the financial year.

All services are either on or ahead of budget, with projections for the next few months looking positive.

While exports are not at the level we saw last year, they have picked up, with around 20,000 animals expected to be processed this month and next.

With summer just around the corner and the year end in sight, I'm looking forward to seeing members at International Dairy Week in January. Hopefully the weather will be kind to us between now and then, and we all find some time to spend with family and friends over the festive period.





# Highlights award recognises Hall's service

**A**shocked, but proud Suzanne Hall was awarded the Holstein Australia Distinguished Service Award at the 2023 Holstein Highlights Awards Night in Bunbury.

Suzanne, with husband Phil and son Tavis, run Roblynne Holsteins at Harvey, Western Australia. She has been an active member of the Northern WA and WA State Sub-branches since 1995.

"I initially got involved to support my husband Phil. We work as a family unit no matter what we do, so with Holsteins it is just an extension of that," Suzanne said.

"Being able to mix with other breeders and farmers and supporting everyone to achieve a positive result is my main goal."

Her roles have included being the Secretary of the WA Northern Sub-branch, Minutes Secretary with the WA Autumn Fair Committee and the Program and Sponsorship Coordinator and Treasurer of the Autumn Dairy Fair WA.

Suzanne has also been a regular exhibitor at WA Holstein Shows and On-Farm Challenge events.

Most recently, she played a key role in

the organisation of the Holstein Australia Annual 'Holstein Highlights' event which was held in Bunbury in September 2023.

"Suzanne always has the Sub-branch best interests before that of her own personal gain," WA State President Lachlan Fry said.

"She is reliable, honest and has a can-do attitude in all WA Holstein-related events and functions. She is passionate about the continual progression of the WA Holstein community."

When asked how being awarded with the Distinguished Service Award made her feel, Suzanne admitted she was shocked to say the least, but very appreciative of the recognition.

"I am very proud and humbled to be selected out of so many people who give so much back to our industry,"

"This award was extra special as I had my husband Phil and sons Tavis and Russell in the room."

The Distinguished Service Award was established in 2012 to recognise those members who have given valuable service to the Association at the local and state levels over a long and sustained period. **HJ**



Suzanne Hall received her Distinguished Service Award at the Holstein Highlights Awards Dinner in Bunbury, WA.

## Barclay Phoenix to judge IDW Holsteins

**B**arclay Phoenix, from Ontario, Canada, will judge the Holsteins at the International Dairy Week (IDW) 2024.

Barclay farms in Greenbank, Ontario, under the prefix of Phoenix Holstein, with his wife Shelley and their three children Keaton, Jaelynn and Janelle. He is also a genetic consultant with Select Sires Canada.

There's no doubt he knows how to select a top cow, having owned, bred or merchandised more than 200 All American or All Canadian nominations.

The World Dairy Expo and Royal Agricultural Winter Fair are just two of the many shows that the 2024 National Holstein Judge has overseen, with a career spanning across the globe



Canadian Barclay Phoenix will judge the Holsteins at IDW 2024.

including Canada, England, Italy, Japan, Holland, Mexico and the United States.

Barclay is heavily involved in showing and

merchandising elite Holstein cattle and has managed numerous top level sales throughout North America, including the Sale of Stars at the Royal Agricultural Winter Fair.

In the judging ring, his career highlights include judging at Borderway (UK), the Italian National, Swiss Expo, Royal Agricultural Winter Fair and World Dairy Expo. He is also a strong supporter of Youth Shows and Showmanship competitions.

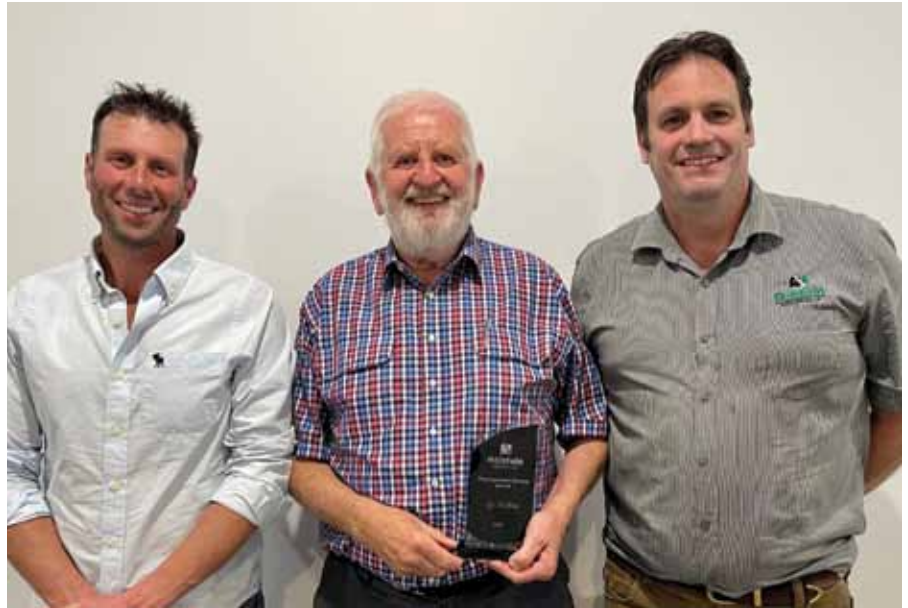
In addition to his role with Select Sires Canada, Barclay works closely with Keaton and his own father Earl, to manage their 100 head beef cow-calf operation. **HJ**

# Long-term industry contribution rewarded

Les White was a 2023 recipient of Holstein Australia's Distinguished Service Award in recognition of his contribution to the association. He has been an active member of the South Gippsland Sub-branch in Victoria for more than 30 years, 14 of which served consecutively as Secretary.

While developing his own successful Holstein herd under the prefix Dilee Holsteins, Les has also been a fierce advocate for the Holstein breed. He's known for his honesty and integrity when breeding and selling Holstein genetics to commercial farmers in the region, while encouraging them to be involved in the association.

He has advanced his herd by embracing technological advances, particularly with the growth of genomic testing and has



South Gippsland Sub-branch President Matthew Templeton, Distinguished Service Award recipient Les White and Holstein Australia CEO Rohan Butler.

supported to the improvement of the Holstein breed through initiatives such as the Ginfo project.

Les was the main organiser for multiple South Gippsland Sub-branch sales and took the lead on behalf of the sub branch organising the 2019 Holstein Australia Annual General Meeting and Awards Dinner at Inverloch.

South Gippsland Sub-branch President, Matthew Templeton, said Les was a master at sourcing sponsorship for events such

as On-Farm Challenges and also attaining publicity for the sub branch events through local media outlets.

"His promotional skills and ability to involve all dairy industry-related people in field events held by the sub branch was inspiring," Matt said.

"Without Les, the South Gippsland Sub-branch would not be what it is today; his passion, enthusiasm and dedication to the breed is second to none." **HJ**

## Get ready to say G'day to HYB's Christie Baker

Holstein Australia is delighted to announce that Christie Baker from South Wales Holstein Young Breeders (HYB) Club will be heading to Australia as part of the Holstein Australia / Holstein UK exchange program.

From a field of strong applicants, Christie was selected based on her passion and enthusiasm for the Holstein breed, HYB and the wider dairy industry.

Christie works on her family farm, milking 300 registered Holsteins under the BB Holsteins prefix. She and her family hosted Holstein Australia's Andrew McRae, recently during his own UK exchange trip.

Aside from missing the worst of the UK winter, Christie is looking forward

to finding out more about the breeding side of the dairy industry in Australia and seeing what there is 'down under' that she can take back with her to further develop her own herd.



Christie Baker at home in South Wales.

Having competed at the All Breeds All Britain Calf Show for as long as she can remember, plus the Royal Welsh Show and more, she's also excited about attending International Dairy Week.

Christie will be spending January in Australia, starting in Victoria's Western District working with the organising team at the Noorat Youth Show. From there she will travel to South Australia, across to Northern Victoria, up through New South Wales, finishing up in Far North Queensland, hosted by Holstein Australia members at each stage of her journey. **HJ**





# Members, youth are paramount issues for new HA President Gino Pacitti

**D**edication, stability and continuity are just three of the qualities that Gino Pacitti brings to the table as the incoming President of Holstein Australia.

Since becoming a Holstein Australia member in 2001, he has dedicated vast amounts of time, passion and energy into promoting the Holstein breed and the dairy community to the next generation of dairy farmers.

Promotion and marketing of the benefits of registered and classified Holstein cows is a high priority for Gino in stepping into the role of President.

"Holstein Australia's classification service is another benchmarking tool for herd improvement," Gino said.

"Having efficient cows that can convert feed into milk, butter fat and protein, contributes enormously.

"I think it's important that we provide a better understanding of the commercial and breed development benefits of the services that Holstein Australia provides, not only to our members, but to the wider dairy community."

## Member Advisory Committee

Gino hopes to maintain a member focus by listening to, and implementing, members' suggestions and directives – which include improving communication between members, sub-branches and head office through the new Member Advisory Committee.

The development of National Youth Pathways is also at a critical point for the future of the dairy industry and Gino hopes this in turn will create the capacity for joint ventures with other breed societies to unite the dairy industry for the benefit of all involved. The development of the new National Dairy Youth Association is an important first step.

"Personally, I have the desire, energy, enthusiasm and passion to ensure that Holstein Australia continually evolves and has the adaptability to change as required to maintain a vibrant and dynamic breed association," he said.



HA's new President Gino Pacitti is passionate about promoting the benefits of registered and classified Holsteins.

Gino's passion for the Holstein breed goes back a long way. He and his wife Mandy have been heavily involved with volunteer roles including their Holstein Australia sub

branch, regional and state shows, youth and educational programs and Holstein Australia committees and board positions.

Coming from a dairying background, Gino's parents actively discouraged him from dairying. It was his passion for cows and the industry that led him back to milking. Gino, and his wife Mandy, used the appendix system to progress their herd from commercial to fully registered under the prefix Misty Brae at their farm at Hindmarsh Tiers, South Australia.

## Master Breeder status

Over the years they built the herd up to 300 milkers, attaining Master Breeder status in 2022.

They utilised technological advances such as embryo transfer and sexed semen to assist with the development of key cow families.

"It all forms part of what I call your superannuation policy," he said.

"You're building up an asset over a period of time, which is proven to be greater than not undertaking those activities and using the services available."

HJ



Gino and son Andrew Pacitti with the next generation at Misty Brae.



# HOLSTEIN

## LOADED

Hano x Doc x Doorman



New release, type and fertility  
**SX \$72 - Conv \$38**

## HASTORIC-RED

Ranger x Altitude-Red x Callen



Red with production and type  
**SX \$70 - Conv \$32**

## MAGIC

Honour x Doc x Delta



Extreme type, udders with fertility  
**SX \$75 - Conv \$35**

## BOLTI-P

Andreas x Bardares x Duke



Elite A2A2, polled BPI sire  
**SX \$50 - Conv \$23**

## DYLAN

Granite x Delta x Doorman



Faultless linear, calving ease and fertility  
**SX \$55 - Conv \$23**

## CARDHU

Conway x Riveting x Guarantee



Complete sire with production, fertility and type  
**SX \$55 - Conv \$23**

\*IDW orders must be a minimum of 25 straws of conventional and 10 straws for sexed.  
IDW offer is valid from the 1st December 2023 to 31st January 2024 or while stocks last. Semen must be delivered prior to March 31st, 2024.

Two brothers from EX96 \$1.9 Million cow, production, type and fertility

## DYNASTY

Perfect x Legacy x Helix

The ultimate all round sire, type, production and fertility backed by cow family.

**SX \$72  
Conv \$38**

## HAVEADREAM

Energy x Doc x Jedi

**SX \$72 Conv \$34**

## HAVELOCK

Homecoming x Doc x Jedi

**SX \$72 Conv \$34**

**FOR EVERY ORDER OVER 100 STRAWS,  
YOU WILL RECEIVE A FREE  
HOODIE!**



# Agri-Gene P/L

123-125 Tone Road, Wangaratta Victoria 3677



P: 03 5722 2666

E: info@agrigen.com.au

www.agrigen.com.au





# Morgan boosts BDCC stocks

## nzholstein

Official publication of Holstein Friesian New Zealand



**SUBSCRIBE NOW FOR NZ\$95\***

Name: \_\_\_\_\_

Address: \_\_\_\_\_

Town/City: \_\_\_\_\_ Postcode: \_\_\_\_\_

Country: \_\_\_\_\_

Phone: \_\_\_\_\_

Email: \_\_\_\_\_

Forward this subscription form or enquires to Anne Boswell  
a.boswell@nzhfa.org.nz, +64 27 394 3904 or post to  
Holstein Friesian New Zealand  
PO Box 9282, Hamilton 3240, New Zealand

\*Annual subscription, three issues per year, postage incl. Payment by bank deposit in NZD and must be exclusive of any bank transaction fees.



The Breed Development and Conformation Committee (BDCC) welcomes a new member in Bill Morgan, from Rushworth, Northern Victoria.

The BDCC will be led by new Chair, Garry Carpenter (Garerley), who will be supported by Wes Brown (Juleanwes), Brett Cirillo (Ambrewlea), Bryan Dickson (Emu Banks), Scott Somerville (Somerelle), Bill Morgan (Waterloo) and Secretariat David Jupp. Bill brings a unique combination of skills and experience to the fold. He studied Agricultural Science at Charles Sturt University before founding Waterloo Holsteins in 2007. For three years he was also a Holstein Australia classifier.

“One of the greatest opportunities I have had in the Holstein industry was working as a classifier. This gave me the opportunity to see the performance of Holstein herds across Australia under a variety of management styles,” Bill said.

In 2015, he moved into his current role as Regional Manager for Northern Victoria and South Australia for ABS Global.

“I work with both small and large herds, registered and commercial. These include family operations with traditional pasture-based systems to large farms investing in high intensity free stall systems,” he said.

“The most consistent, profitable and sustainable herds I have worked with are those that focus on breeding a balanced animal.”

The BDCC is responsible for setting direction for the present and future production and functional characteristics of the Holstein breed in Australia.

HJ



# Celebrating 2023's outstanding cows

Lifetime achievement awards recognise the silent achievers in the herd. Holstein Australia has three elite production awards that provide an objective assessment of the progress of your breeding program. They are:

1. Lifetime Production Achievement
2. Star Brood Cow.
3. Superior Total Performance

Following is a list of cows receiving the top awards for the 2022/23 financial year.

## Lifetime Production

Lifetime Production (LTP) Awards recognise animals with exceptional production (litres, fat and protein) over their lifetime. There are five levels of LTP, with level 5, Diamond being the highest. The minimum production requirements to achieve Diamond LTP are: 110,000 Litres, 4,180 kg Fat and 3,575 kg Protein. It takes a truly exceptional cow to achieve a Diamond LTP. The LTP can be awarded posthumous.

Refer to the Holstein Australia website for more information.

Lifetime Production – Diamond – Level 5		
Animal Name	Classification	Owner
BLACKWOOD PARK SHOCK DONNA 6771-TWIN	VG88	ALTMANN FARMS
FANTASIA RENEGADE MELODY-ET	EX-3E	FANTASIA PASTORAL CO P/L
KENTISH DOWNS JUROR MAGGIE	VG86	KENTISH DOWNS PROPRIETORS
WARRABELL BLADE LEESA-TWIN	EX-92-4E	D J & T A FIEBIG
WILARA OHGJOSE TRACY	EX-92-4E	W E & M J & T W HENRY

Lifetime Production – Gold – Level 4		
Animal Name	Classification	Owner
BILLABONG DONANTE SUNSHINE	VG88	BILLABONG HOLSTEINS PTY LTD
BILLABONG LUCENTE MIN	VG85	BILLABONG HOLSTEINS PTY LTD
BLACKWOOD PARK EXPLODE NINA 6926	EX-90-3E	ALTMANN FARMS
BLACKWOOD PARK JANOME KARA 6849	VG88	ALTMANN FARMS
BLACKWOOD PARK LAVERNE LOIS 6971	VG87	ALTMANN FARMS
BRINDABELLA BAXTER NAN	VG89	JADE & SCOTT SIEBEN
CARENDA BEACON BEYONCE	VG89	KITCHEN FARMS
CARENDA MCCORMICK VODKA	EX-90-1E	KITCHEN FARMS
CLYDEVALE AUGUSTA IDOL	VG88	CLYDEVALE HOLSTEINS PTY LTD ATF DEE FAMILY TRUST
CLYDEVALE BEAU PREDICTION	VG88	CLYDEVALE HOLSTEINS PTY LTD ATF DEE FAMILY TRUST
CLYDEVALE MICKEY PIZZA	EX-90-2E	CLYDEVALE HOLSTEINS PTY LTD ATF DEE FAMILY TRUST
CLYDEVALE REDESIGN PAMPARI	EX-91-5E	CLYDEVALE HOLSTEINS PTY LTD ATF DEE FAMILY TRUST
CLYDEVALE TOYSTORY GINA	EX-93-4E	CLYDEVALE HOLSTEINS PTY LTD ATF DEE FAMILY TRUST
CURRAJUGLE JOSE DANA 1413	VG88	K N & S K JOLLIFFE
DILEE EIGHT OLLIE 328	VG87	DILEE HOLSTEINS
FAIRVALE REG JOSIE 34	EX-95-4E	DARYL COLE
GILABILS ORANA NARA-TWIN	VG89	W H & C J STEWART

Lifetime Production – Gold – Level 4 (continud)		
GILDON MOET SURRY	EX-90-3E	GILDON PARTNERSHIP
GLENMAR AGUSTIN PEACH-TWIN	VG87	BENLARGO HOLSTEINS
GOLDENVIEW DICTATOR ANGELA	EX-92-2E	S J & M E PORTWINE
HALEWOOD GOLDMINE COVERGIRL	VG85	HASSETT FAMILY
JOELLAN BLITZ 3281	EX-90-3E	R L & T L WISHART
KENTISH DOWNS HILSTAR PIETJE	GP81	KENTISH DOWNS PROPRIETORS
LAWRYS MAL 5341		LAWRY FAMILY TRUST
LEA VIEW GORDON 1053		TMJA PARISH FAMILY TRUST
LEEUWIN CANDY 50TH	VG88	W F & M A BIDDULPH
MEDBRAE CREW DORA	EX-90-1E	L & M A & P & A DE CICCIO
MURRIBROOK GOLDWYN VERBENA-ET	EX-92-2E	NATHAN J SMITH/D & N SMITH
NEWLYN PARK MILL MAGNOLIA	VG88	H A NEWMAN & CO
NUMERALLA PLANET 4522		NUMERALLA
PURNIM JUNCO BEAUTY		PURNIM HOLSTEINS
ROWLANDS PARK SOCRATES CAROL	EX-91-4E	R L & T L WISHART
SUNDAY RIDGE BLITZ PAULA 10818	VG88	JESTBURY HOLSTEINS
TEMPLE STUD FREDDIE 5170	VG88	MATTHEW DANIEL
TOMARGO RECLUSE ANT STARBABY	EX-90-1E	S D & E G CHESWORTH
TREETON POWERPLAY SYLVIA	EX-92-3E	G A & L E JENKINS
WARRABELL BLADE LUCKY-TWIN	EX-93-6E	BRETT M FIEBIG
WILLATANI LADINO SALLY 2566	GP82	WILLATANI HOLSTEINS

## Star Brood Cow awards

The Star Brood Cow Award recognises genetically superior brood cows based on the conformation and production performance of their progeny. To qualify a cow need not be classified but must have produced at least three progeny classified GOOD PLUS or better.

Star Brood Cow – 10 Stars and higher			
Name	Classification	Owner	SBC Award
MARIO PARK GOLDWYN ALICIA	EX-93-4E	MURRAY POLSON	Level 21
CLYDEVALE MRSAM PISA	EX-91-3E	CLYDEVALE HOLSTEINS PTY LTD ATF DEE FAMILY TRUST	Level 17
FAIRVALE MORTY LADY 51	EX-97-5E	LINSAND FARMS PTY LTD	Level 12
KINDARA NUCLEAR SPOTTY	VG88	K N & S K JOLLIFFE	Level 12
BRINDABELLA LADINO FANTA-ET	VG89	JADE & SCOTT SIEBEN	Level 11
BUSHLEA ZEL SATIN 2ND-ET	EX-90-2E	CLYDEVALE HOLSTEINS PTY LTD ATF DEE FAMILY TRUST	Level 11
ELM BANKS MALACHITE MADELEINE	EX-91-4E	CHRIS & MARY GLEESON	Level 11
MURRIBROOK GOLDWYN VERBENA-ET	EX-92-2E	NATHAN J SMITH/D & N SMITH	Level 11
BURNVALE ALLEN BELLE	EX-90-1E	MITCH HOLSTEINS	Level 10
ECLIPSE DAMION G PRINCESS	EX-90-2E	RICHARD HULL	Level 10
KAVYN STADEL PEARL	VG88	ANDREW PACITTI	Level 10
SENSEI SANCHEZ POSIE-ET	VG87	FRED & SONYIA DE CICCIO & SONS/L & M A & P & A DE CICCIO	Level 10



## Superior Total Performance

The Superior Total Performance (STP) award recognises longevity. These awards are applied for individually at classification. To be eligible a cow must classify with a type of VG85 or higher; have a mammary value of at least 85; have milked for at least six lactations and meet the production requirements for the STP level. A diamond STP cow is the most exceptional of all the HA awards.

Refer to the Holstein Australia website for Superior Total Performance category details and minimum standards.

Superior Total Performance (Diamond and Gold)			
Name	Classification	Owner	STP Award
LEEUWIN CANDY 50TH	VG88	W F & M A BIDDULPH	Diamond
TREETON POWERPLAY SYLVIA	EX-92-3E	G A & L E JENKINS	Diamond
WILARA JUSTICE AGNESCA	EX-90-1E	W E & M J & T W HENRY	Diamond
BELBROOK LANCELOT EVIE	VG88	B L & M COSTER	Gold
BOSCAWEN BRODY FRED A 4993	VG88	BOSCAWEN HOLSTEINS	Gold
CARENDA MCCORMICK VODKA	EX-90-1E	KITCHEN FARMS	Gold
CLYDEVALE MICKEY PLEASED	EX-90-2E	CLYDEVALE HOLSTEINS PTY LTD ATF DEE FAMILY TRUST	Gold
ELANEN SEATTLE CALIFORNIA	VG89	N J COSTER	Gold
FOREST MEADOW TOOKAI BINGO	EX-90-1E	T & K COCHRANE	Gold
ROLYNCA FREEWILL KATHLEEN	VG85	J O & A B ZURRER	Gold
ROWLANDS PARK BOLT LUCKY-ET	EX-90-2E	R L & T L WISHART	Gold
SILVERMERE DESTRY CRESSY	VG85	SILVERMERE HOLSTEINS	Gold
WARRAWAE PARK INFORMER LULU	VG85	S J & M E PORTWINE	Gold
WARRAWAE PARK SHOTTLE NILVERM	VG88	S J & M E PORTWINE	Gold
WESTDAMA EMPIRE TRAM	VG89	WESTDAMA HOLSTEINS	Gold
WESTDAMA LOUMATIC SUNDAY	EX-91-4E	WESTDAMA HOLSTEINS	Gold

## 2022-2023 Master Breeders

The highly-coveted Master Breeder Award recognises the long-term achievement of herds that have bred at least 300 registered animals over a minimum of 20 years. Points are awarded for classification scores, star brood, production and performance awards. \* Asterisk denotes 2nd Master Breeder award.



Prefix	Name	Location	Branch
Billabong	Billabong Holsteins PTY LTD	Woods Point	Fleurieu & Central SA
Byrne Lea	Craig & Fiona Fisher	Jack River	Western District VIC
Glenjoy*	Rathjen Farming Trust	Springton	Fleurieu & Central SA
Glyncol	G C & H & G G Cillins	Newbridge	North-Western VIC
Misty Brae	Misty Brae Holsteins PTY LTD	Myponga	Fleurieu & Central SA
Rockwella	Rockwella Farm Holsteins	Yankalilla	Fleurieu & Central SA
Yelverdale*	A C & C A Jenkins	Busselton	Southern WA
Fantasia*	Fantasia Pastoral Co P/L	Mt Gambier	South Eastern SA
Calderlea*	L G & L A & T C Calder	Meeniyan	South Gippsland VIC
Brampton Park*	R B & H Mountford	Rosabrook	Southern WA
Treeton*	G A & L E Jenkins	Cowaramup	Southern WA
Newlyn Park*	H A Newman & Co	Meadows	Fleurieu & Central SA

# Relationships between conformation and profitability

BY ALLY BIRD  
 Holstein Australia Special Projects Officer

Holstein Australia classifiers carry out more than 30,000 classifications each year. This core service forms a key part of many member breeding programs. Its primary purpose is to help farmers make informed decisions about which cows in their herd are most likely to perform well or to under-perform.

My research, based on an analysis of 155,000 animals in the Holstein Australia system, explored the relationships between the conformation (classification scores) of Holstein cows and animal performance (phenotypic) for traits that influence profitability.

The purpose of the study was twofold. Firstly, to identify how classification scores correlate to important profitability traits such as production, fertility, survivability, workability and sustainability. And secondly, to assess whether the classification system could be refined to better select for profitability.

The analysis looked at both actual classification score and ranking for Overall Type: Fair (65-70), Good (75-79), Good Plus Low (80-81), Good Plus High (82-84) and Very Good (85-89).

## Key findings

- Type has a strong, desirable relationship with yield and survival traits.
- Type is negatively linked to calving interval (which is an indicator of fertility).
- There is a limited weak link between type and a cow's sire's genetic merit for sustainability.

## Milk Production

The analysis showed that Overall Type had a positive relationship with milk yield (Figure 1), fat yield, and protein yield in herd test results.

The Dairy Strength and Feet & Legs composite scores had the strongest positive relationships with production. This is because many of the linear type traits included in the calculations of these

composite scores, including Stature and Angularity for Dairy Strength, and Rear Leg Rear View for Feet & Legs had positive relationships with production.

According to past research, Mammary System is typically highly linked to production, but here it was found to have the weakest relationship of all four of the composite traits, which could be due to the heavy weighting of Udder Depth within the Mammary System composite score.

Cows with deep udders tend to have greater milk and milk solid production, but because deep udders attract low scores (i.e. 1 is a deep udder, and 9 is a shallow udder), these animals may have lower Mammary System scores than their counterparts, with better production potential.

## Somatic Cell Score

This part of the analysis looked at Somatic Cell Score which is derived from somatic cell count (SCC) in herd test data.

Overall Type had a beneficial relationship

with Somatic Cell Score (Figure 2), that is, the higher the overall type, the better (lower) the Somatic Cell Score.

The Mammary System composite score had the strongest beneficial relationship with Somatic Cell Score, which is likely because cows with shallow udders are less susceptible to mammary infection.

Conversely, the Dairy Strength composite score had an undesirable relationship with Somatic Cell Score. The inclusion of certain linear type traits in the Dairy Strength composite, especially Angularity, means that cows with high-energy demands tend to have higher Dairy Strength scores. Previous research shows these cows are more susceptible to infection, and thus tend to have greater Somatic Cell Score.

However, as Mammary System has greater weighting in the Overall Type calculation, it outweighs the undesirable effects of Dairy Strength on Somatic Cell Score to give an overall desirable relationship between conformation and Somatic Cell Score.

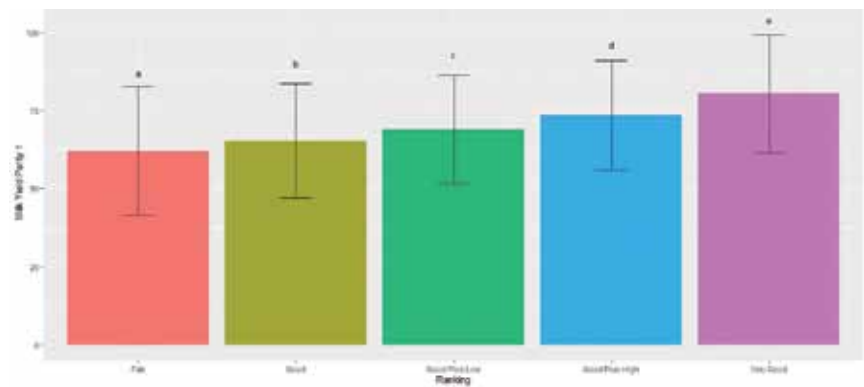


Figure 1: First lactation milk yield (305 days) across ranking.

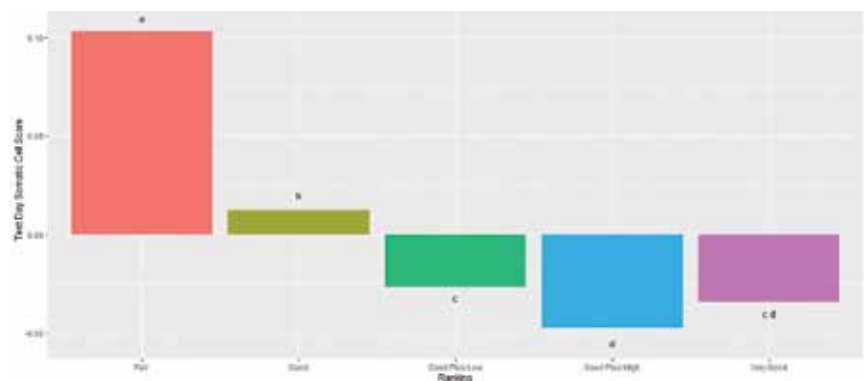


Figure 2 – Somatic Cell Score across ranking.



### Calving Interval

Calving Interval was shown to increase with Overall Type score and ranking (Figure 3), indicating a negative relationship. Calving interval is an indicator of a cow's fertility so the findings suggest that animals with higher Overall Type are likely to be less fertile.

High Overall Type animals were shown to have improved milk production, which helps to explain the undesirable relationship between Overall Type and Calving Interval. It is widely accepted that cows with high milk yields tend to have poorer fertility, as they must invest their energy resources into the current calf through milk production, rather than the future calf through maintaining body condition. This is supported by an undesirable relationship between Calving Interval and Angularity, which is a trait inversely related to body condition score.

Despite the overall undesirable relationship between Overall Type and Calving Interval, some linear type traits including Udder Depth, have desirable relationships with Calving Interval. These could be more heavily weighted within the Overall Type calculation to improve the relationship between Overall Type and fertility.

### Workability

Workability refers to the three traits that reflect how easy a cow is to have in the herd: milking speed, shed temperament and overall likeability. Farmers report workability scores on a 5-point scale with 1 being the most desirable and 5 being the least desirable.

All workability scores had beneficial relationships with Overall Type, but correlations were strongest between Type and Likability.

Dairy Strength and Mammary System had the strongest relationships with workability. These traits are traditionally the most closely related to milk production, which suggests that cows with high milk production have greater workability, or are perceived to have greater workability, thus influencing farmers to give cows higher workability scores.

### Survival

Overall Type was shown to be more closely related to early survival, (survival between first and second calving), but survival rates for both first lactation and subsequent

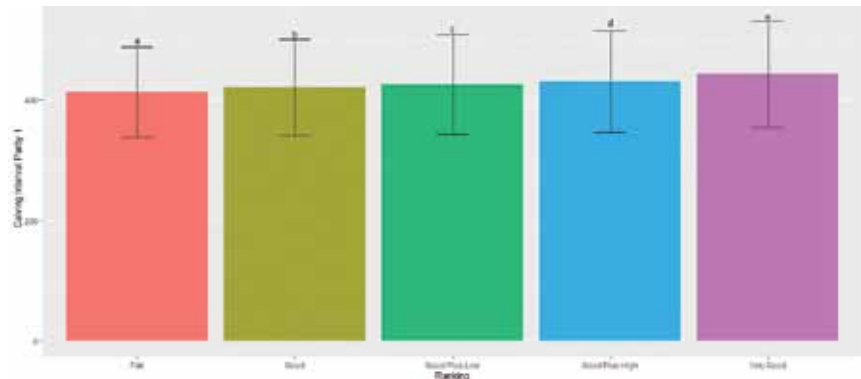


Figure 3 – Calving Interval between first and second calving (days) across ranking.

lactations were shown to increase with Overall Type.

For early survival, Mammary System and Dairy Strength were most closely related to survival. This could be due to the relationships between these composite scores and milk production, as studies have shown that low milk yield is a common reason for voluntary culling after the first lactation.

For survival in later lactations, Mammary System had the strongest relationship. Udder Depth may be contributing to this result due to its desirable relationship with Somatic Cell Score, with mastitis being a common reason for removal from the herd. Conversely, Dairy Strength has an undesirable relationship with late survival, in particular, the Body Depth linear type trait. Body Depth has an intermediate optimum, with studies showing that cows with too much depth may have lower chance of survival into later life.

### Sustainability

The Sustainability Index is a measure of genetic merit, to help farmers breed animals that produce lower emissions, while improving important economic traits. It applies weighting to traits such as production, survival, mastitis resistance, fertility, feed saved, type and workability.

The analysis showed a negative relationship between negative Overall Type and Sire Sustainability Index.

Although the relationships were significant, they were very weak, indicating that type is not currently a strong indicator of sustainability.

Dairy Strength had the strongest negative relationship to sire Sustainability Index, especially the angularity Linear Type trait. Highly angular cows have high milk

production so would be expected to have higher Sire Sustainability Index scores. However, they are also more susceptible to mammary infection which can result in removal from the herd, thus lowering survivability.


Rear Set of Leg had the strongest positive correlation with sire Sustainability Index, which indicates that the index is selecting for daughters with correct feet and legs. These cows are less likely to suffer chronic lameness, which is a common reason for removal from the herd.

As shown above, those traits with strong correlations to sire Sustainability index are also closely linked to survival. Cows with good longevity positively contribute to the sustainability as well as the profitability of the herd, and they minimize the outputs required to breed replacement heifers.

### Summary

In summary, this study identified desirable relationships between type and milk production, somatic cell score, workability and survival, but undesirable relationships between type and fertility and sustainability.

Overall Type, Dairy Strength and Mammary System had the strongest influences on profitability, in particular the linear type traits Angularity and Udder Depth.

Because some of the observed correlations were weak, and some undesirable, the findings suggest that the classification system could be refined to better select for profitability. 

**For a copy of research document, 'The Relationships between Profitability Traits and Conformation in Holstein Cows' contact Ally Bird on 03 9835 7600 or ask for a copy at your next classification visit.**

# Benlargo Holsteins take dual championships at Royal Adelaide



BY JON HOLLAND

A dam and daughter pair took out the Senior Champion and Intermediate Champion titles at the 2023 Royal Adelaide Show, in a dominant display by South Australian Holstein breeders, Ben and Angela Tweddle, Benlargo Holsteins.

Benlargo Elijah Ding EX-91-1E also added the Grand Champion Dairy Cow title to her already long list of accolades, while her 2-year-old daughter, Benlargo Alligator Ding VG85, impressed on her first outing, taking home the Intermediate Holstein crown.

The Reserve Senior title went to the 2022 International Dairy Week Intermediate Champion, Eclipse Altitude J Princess-ET-RED VG87, exhibited by Rob and Bec Walmsley, Robsvue Holsteins.

The Walmsleys also claimed the Reserve Intermediate title with their winning senior 2-year-old, Robsvue Crushabull Piper GP84.

The Junior section belonged to the Liebelt family with their yearling entry, Grantley Sidekick Fifi named Champion. The Tweddles received Reserve with their junior calf, Benlargo Victor Noni.

The Premier Breeder and Premier Exhibitor banners also went to the Tweddle family.

Ben and Angela have been breeding with the Ding family for nearly 15 years after buying shares in the Essgee Syndicate that owned the two-time International Dairy Week Intermediate Champion and 2007 All Australian Mature Cow, Tiger Farms SG Ding-ET EX-93-2E 2\* 1xF.

Angela has been a huge fan of the Ding cow family for a long time. She said the bloodline had worked exceedingly well at Benlargo Holsteins with more than 40 descendants currently milking in their herd.

“The Dings are always really good, balanced cows that give a heap of milk and really nice components,” she said. “But most importantly they’re cows that breed on; they calve every year, have lots of heifer calves, and it doesn’t matter what bull you use over them, they’re still going to be good.”

Angela said Elijah Ding had been a consistent member of the Benlargo show team since she was a calf. She won Intermediate Champion at Adelaide as a Senior 2-year-old in 2019, along with her previous class wins at Adelaide, Mt Gambier, the Victorian Winter Fair, International Dairy Week and the Semex On Farm Challenge.

Ding has also claimed back-to-back Reserve titles in 2023 and 2022 in the Semex Holstein Australia All Australian competition.

**TOP LEFT:** Royal Adelaide Show Grand Champion Dairy Cow – Benlargo Elijah Ding EX-91-1E with Shae Tweddle, Lucy Edmonds and Angela Tweddle, bred by the Tweddle family, Benlargo Holsteins, SA. *Photograph: Jo Dickson*

**LEFT:** Royal Adelaide Show Intermediate Champion Holstein, Benlargo Alligator Ding VG85, with Shae Tweddle, Benlargo Holsteins and judge Cameron Yarnold. *Photograph: Jo Dickson*



"She just keeps coming back into form," Angela said of her champion. "Any time you look at her – at the show or in the paddock – she always looks good. She really is the standout cow in our herd."

Even after producing her second set of twins earlier this year, Elijah has not held back, and has been short-bred to sexed MB-Luckylady Bullseye, with plans to show her fresh in milk at the Holstein Feature at Royal Adelaide in 2024.

Her daughter, Benlargo Alligator Ding VG85, stood next to her dam to win the dam and daughter class.

Angela said Alligator Ding is a "genuine" junior 2-year-old, calving at 24 months, and shows similar promise to her Champion dam.

"She may be even better than her mum in a lot of ways," she said. "She's a little wider in the chest and wider in her rear udder, and a little more mature than her mum was at that age. And she's doing it all herself – everything's going right for her." HJ

## Royal Adelaide Show results

**Judge: Cameron Yarnold, Arrallik Holsteins, NSW**

**Senior Champion cow:** Benlargo Elijah Ding, B & A Tweddle, Benlargo Holsteins, Glencoe, SA; **Reserve:** Eclipse Altitude J Princess-ET-RED, R & R Walmsley, Robsvue Holsteins, Myponga, SA

**Intermediate Champion:** Benlargo Alligator Ding, B & A Tweddle, Benlargo Holsteins, Glencoe, SA; **Reserve:** Robsvue Crushabull Piper, R & R Walmsley, Robsvue Holsteins, Myponga, SA

**Junior Champion:** Grantley Sidekick Fifi, G Liebelt, Grantley Holsteins, Meadow, SA; **Reserve:** Benlargo Victor Noni, B & A Tweddle, Benlargo Holsteins, Glencoe, SA

# Rockstar scoops the pool at NSW State Show in Nowra

Ten-year-old Galba Axe Dutchlady 2<sup>nd</sup> EX-93-2E has won her first major title, crowned Senior Champion Holstein and Grand Champion Dairy Cow at the NSW State Show at Nowra in September.

She was bred by Tony Allen of Galba Holsteins and his son Rocky Allen of Rockstar Holsteins, who also claimed the Intermediate and Junior Championship titles, along with Premier Breeder and Exhibitor.

Dutchlady arrived at the show in stellar form, using her EX-94 mammary and EX-94 dairy strength to overpower the competition.

For the judge, Brian Leslie, Dutchlady was an easy choice and a "wonderful example of the model we are looking for."

"My senior champion was a tremendous framed cow, with all kinds of width and a tremendous top to her, along with her terrific depth," Brian said. "Then you look at her absolute dairyness, topped off with a great udder."

"I'm certainly not one to make older cows champion just because they're old," he continued. "But this is one wonderful cow, and edged out our outstanding reserve cow on her cleanness and openness today."

Dutchlady placed ahead of the winning 6-year-old, Glenalbas Archrival Karmel



NSW State Show Senior Champion Galba Axe Dutchlady 2nd EX-93-2E, exhibited by the Allen family, Galba/Rockstar Holsteins, Cobargo, NSW.

EX-90-1E, exhibited by the Garratty family, Glenalbas Holsteins, with the 4-year-old Coolea Bradnick Noni EX-90-1E, exhibited by the Crawford family, pulled in for Honourable Mention.

Brian selected Rocky Allen's 3-year-old Gorbro Crushabull Jessica VG87 as his Intermediate Champion, praising her for her great form and her depth and spring

to her rib. The Reserve title went to the Garratty family for their senior 2-year-old Glenalbas Diamondback Alison-ET VG85. The Cass family received the Honourable Mention for their Junior 2-year-old Cassawarry Tadoo Connie VG86.

The Junior section again belonged to Rocky Allen, with his senior calf, Rockstar Lambda Saturday impressing the judge





with her balance of strength and dairyness and correct set to her leg.

“This indeed is one top calf with the potential, barring accidents, to make a great cow,” Brian said.

Jim Strong claimed the Reserve junior with Strongbark Master Tiffany-ET, with Matt Russell in Honourable Mention with his entry, Boscowen Moovin Princess 9366.

The Grand Champion, Dutchlady is a daughter of the homegrown sire, Galba Shottle Axe, and traces back to Elmsdale RM Dutchlady 74<sup>th</sup>-TW VG 86, a cow bought by Tony at the Elmsdale of dispersal Des Vallance and family in 2001.

Dutchlady has been a consistent member of Rocky’s show team for a number of years, though he admits she has “really hit her straps” this lactation.

“She has always been a good herd cow, and won the on farm challenge here a few years back,” Rocky said. “But she just keeps getting better now as a mature cow and was in good form at the show.”

Rocky said Dutchlady is quite typical of the type of cow he likes to breed.

“She has great all-round functionality, a good set of legs, a real good udder, and she’s got a bit of frame about her too.”

It was the first time Rocky and his Rockstar/Galba team have managed a clean sweep of all three champion titles at a major show which Rocky says is important for building recognition for his stud and promoting his genetics.

“We can all have paddock ornaments, but if you don’t go, you won’t know – and no one else will know what you have either,”



NSW State Show Intermediate Champion Gorbro Crushabull Jessica VG87, exhibited by the Allen family, Galba/Rockstar Holsteins, Cobargo, NSW.

### NSW State Show results

**Judge: Brian Leslie, DLS Livestock, Pooley Bridge Holsteins**

**Senior Champion cow:** Galba Axe Dutchlady 2nd, AJ & RA Allen, Galba/Rockstar Holsteins, Cobargo, NSW;

**Reserve:** Glenalbas Archival Karmel, AF Garratty, Glenalbas Holsteins, Nowra, NSW;

**Honourable Mention:** Coolea Bradnick Noni, Crawford family, Coolea Holsteins, Numbaa, NSW.

**Intermediate Champion:** Gorbro Crushabull Jessica, AJ & RA Allen, Galba/Rockstar Holsteins, Cobargo, NSW;

**Reserve:** Glenalbas Diamondback Alison, AF Garratty, Glenalbas Holsteins, Nowra, NSW;

**Honourable Mention:** Casswarry Tadoo Connie, WT, KA & SW Cass, Casswarry Holsteins, Rose Valley, NSW.

**Junior Champion:** Rockstar Lambda Saturday, AJ & RA Allen, Galba/Rockstar Holsteins, Cobargo, NSW;

**Reserve:** Strongbark Master Tiffany, J Strong, Strongbark Holsteins, Tongarra, NSW;

**Honourable Mention:** Boscowen Moovin Princess 9366, M Russell, Boscowen Holsteins, Nowra, NSW.

he said. “It’s a pretty prestigious show, and sometimes it can be a risk – but if you don’t take a risk sometimes, you won’t get the rewards.”

“We’ve learnt a lot over the last 20 years in showing, and we keep trying to improve our cattle and our preparation. In the end – every dairy farmer has their own good cow family, and if you work closely with them over the years, then every few generations or so, they might pop up another special one. That’s the art of breeding.”

#### Focus on elite bloodlines

Trading and promoting elite bloodlines has become an important inclusion to Rocky’s operation, with both his Intermediate and Junior Champions representing recent strategic investments.

“It’s a small world now with genetics so I am always on the hunt for new bloodlines

that could attract new buyers,” Rocky said.

He paid top price of \$22,500 for his Champion Intermediate, Jessica in 2020 at the Gorbro Golden Opportunity sale in a partnership with Canadian Holstein breeder Blair Weeks (Weeksdale). She has since exported embryos overseas with three yearling daughters in Canada by Blondin Thunder Storm, who in-turn have exported embryos to Ireland.

Rocky is excited by the success he has achieved with Jessica locally, along with the interest her progeny are creating overseas. He hopes the Jessicas will eventually receive a similar level of recognition in Canada that another successful Australian cow family has achieved – the Bonnies.

“The Bonnies are now a household name over there, and it is opening more and more opportunities now for international breeders to buy Australian genetics.” **HJ**



NSW State Show Junior Champion Rockstar Lambda Saturday, exhibited by the Allen family, Galba/Rockstar Holsteins, Cobargo, NSW.

# All-Australian Competition Update

Two key changes have been made to the format of the Semex Holstein Australia All-Australian Photographic Competition, following a review by the Breed Development and Conformation Committee (BDCC). The changes relate to the competition timing and the judge requirement for eligible shows.

The BDCC thanks members who regularly take part in this competition for providing information to assist with the decision-making process.

## Competition timing

The timing of the competition, particularly its proximity to the end of June closing date for the Victorian Winter Fair, was a matter raised by members with the BDCC.

The closing date will now be 31 May, which should resolve the issues experienced by some members in obtaining photographs after the show, plus the complication of the Victorian Winter Fair taking place over the last few days of June / first few days of July. In addition to the member input received, Holstein Australia consulted with the Victorian Winter Fair organisers, who support the timing change.

This means that next year's Victorian Winter Fair will not feature in the current competition but will form part of the 2024 / 2025 competition.

Competition Year	Opening Date	Closing Date
2023 / 2024	1 July 2023	31 May 2024
2024 / 2025	1 June 2024	31 May 2025

## Judges

Animals exhibited at any Australian show adjudicated by a judge from the following categories will be eligible for entry into the Semex Holstein Australia All-Australian Photographic Competition:

- Judge is a member of the Holstein Australia National Judges Panel.
- Judge is a member of another Australian dairy breed association panel.
- Judge is recognised by an international dairy breed association panel.

## Members' Choice Award

For the first time at the end of the current competition year members will have the opportunity to take part in the Semex Holstein Australia All-Australian Members' Choice Award, putting their judging skills to the test in a fun and engaging way.

Entries for the Members' Choice Award will open once finalists are announced and close a week prior to the National Awards Dinner.

## Future changes

The BDCC also discussed advances in digital photography post-production and any potential impact on the competition.



It is envisaged that any recommended changes in this area would take effect for the 2024/2025 competition and beyond.

Under the current rules photographs that have been subjected to digital modification are ineligible, except for alterations that do not affect the conformation of the cow. Random testing for digital enhancement of photographs may also be done at the judges' discretion, with photographs that return a positive to any sort of enhancement (except for the above) disqualified.

Any questions in relation to these changes can be sent to [awards@holstein.com.au](mailto:awards@holstein.com.au) or contact John Crowther on (03) 9835 7600. **HJ**

## CORRECTION

Following the rejudging of one of the 2023 Semex Holstein Australia All-Australian Photographic Competition classes an error was discovered in the points calculation for Premier Breeder after the Spring *Holstein Journal* was published.

The Spring issue of the Journal recognised Eclipse Genetics (Richard Hull) as Premier Breeder. Following recalculation of the points for this award, the 2023 Premier Breeder has been confirmed as Avonlea Holsteins (JH and CJ Gardiner). Premier Exhibitor, as stated in the Spring Journal, is Gorbro Holsteins (RK and JR Gordon).

## PREMIER BREEDER

Awarded to:

**JH and CJ Gardiner**  
**Avonlea Holsteins**

Premier Breeder award  
sponsored by WFI





# Emmalea's life-changing expo experience

BY AMANDA GLOSSOP

The disappointment of missing out the 2022 Power of Women scholarship became the catalyst to a life-changing World Dairy Expo experience for Emmalea Wishart.

"I applied last year and was unsuccessful. I was disheartened when I didn't get it but I went on to realise that there are a lot of women in the dairy industry so deserving of this scholarship," Emmalea said.

Emmalea was overwhelmed and excited when she heard application was successful

this year. "I cried when they told me. I don't cry very often but it was an honour to be selected this year."

Emmalea's passion for dairy came from growing up farming and being involved in showing Holsteins since she was a little girl.

Rowlands Park Holsteins at Cohuna in north-west Victoria is run Rick and Tina Wishart with support from their daughters Emmalea and April.

Emmalea's main responsibilities on their 400-cow dairy farm include calf rearing,

pasture and fodder management and cropping.

The tight family unit was in full support of Emmalea's overseas travel.

"I am very grateful to my parents for giving me the time off work to be able to come over and live out this lifelong dream – it's amazing!" she said.

"The scholarship gave me money towards my trip. I simply wouldn't have been able to do it if it wasn't for the scholarship."

Emmalea told the selection panel for the Power of Women in Dairying World Dairy Expo scholarship that she dreamt of someday travelling to Madison and witnessing the exceptional standard of dairy cows first hand.

Emmalea was driven to apply for the scholarship again by the desire to expand her knowledge of diverse farming practices and meet like-minded people.

## Farm visits

Determined to make the most of her trip to Wisconsin, Emmalea visited the incredible facilities at Milksource which boasts a commercial dairy and top-notch stud facility.

She was in awe of the scale of the operation. "The commercial side is absolutely huge. I didn't get to experience all of that because they were harvesting maize at the time and there were trucks coming and going."

But it was the registered herd that really caught Emmalea's attention.

"I got to look at their herd and their genomics and that was unbelievable," she said.

"We had a great herdsman take us around for the day, which was awesome."

The 24-year-old was not obligated to work during her trip to World Dairy Expo but chose to make the most of opportunities to learn and gain new skills.

"A few mates in Australia got me onto Maple-Leigh Futures saying they were very nice people and that I would have an excellent time if I worked with them – which was absolutely true."

One of the key people at Maple-Leigh Futures was Tanner Schmaling who was the associate Judge for the 2023 WDE Red & White Show. This meant their show string could only exhibit in the Junior Holstein and Holstein shows.



Emmalea with Ryan-Vu Unix Shasti.





"He (Tanner) was not allowed in the barns or anything up until the Thursday, so it was kind of weird not having a boss for the week," Emmalea said.

"I think that talks a lot about their institution and how they run things, that they have people that can step up and make the show run just like the boss is there."

While the bulk of Emmalea's time at WDE was spent working with the Maple-Leigh Futures show string, she did get to enjoy some of the live action that she had dreamt about for so many years.

"I got to watch a fair bit of the shows – whether that was through livestream or actually in the shed. That was absolutely amazing. You wouldn't call it a shed, it's a stadium for cows – it was so cool! It takes your breath away when you first walk in there and the coloured shavings just make it such a grand reveal," she said of the first moment entering the Alliant Energy Centre.

"Probably my favourite part of the whole show was the Supreme Champion and getting to watch that."

"It was absolutely phenomenal – I had goosebumps from head to toe. It felt so surreal. I was really emotional that I was there and living this moment. It was just unbelievable!"

### Show stoppers

The whole of WDE was on the edge of their seats, following the battle of the two-previous champions in 6 Years & Over In-Milk class; with 2021 WDE Champion Erbaces Snapple Shakira-ET EX-97 prevailing over the reigning Champion Oakfield Solomon Footloose-ET EX-97. Emmalea was thrilled to see these two industry stalwarts in the flesh.

"I had a look at both Footloose and Shakira a few days before they hit the ring; even without milk on board, they both still looked breath taking.

"Shakira's length and her style is something that I haven't really seen before. You can tell why she has such a reputation and has done so well. She's unbelievable!"

Emmalea won't forget 17-year-old Loyalyn Goldwyn June EX-97-7E, who made an incredible 32-hour trip from Quebec, Canada, to compete.

"I was fortunate enough to walk past June on my way from the parking lot when



Developing new friendships at WDE: Taylor Haeft, Aubree Topp, Emmalea Wishart and Kylie Konyn.

I would arrive or leave WDE and I think there was only one morning at about 4 am when there weren't people looking at her.

"It was surreal to walk past and have spectators walking past and looking at cows. It was like she was the Beyonce of cows – everyone just stops and stares and were like, 'you are phenomenal!'"

Working directly with the Maple-Leigh string gave Emmalea an appreciation for a couple of cows. One was Milksource Tantalize-RED-ET, who placed 2<sup>nd</sup> in her Junior 2-Year-Old class in the Junior Holstein Show.

"She was a red and white; a really youthful and just complete cow, full of potential with that width and strength," Emmalea said.

Another favourite was Ryan-Vi Unix Shasti, who placed 2<sup>nd</sup> behind the incredible Ladyrose Caught Your Eye in the 4-Year Old In-Milk class.

"She was just turning it on every day. We didn't have to do anything to prep her – she just looked good every day," Emmalea said.

"I didn't get a chance to look at many show strings because I was working hard and obviously trying to make a good impression and show them what Aussies can do!

Emmalea was surprised by the differences between different countries in terms of their approaches to preparing animals for shows.

"I learnt a lot of tips and tricks, which was awesome – getting to work with some different fitters and seeing different ways that they do things. Probably more on the fitting side of things and preparation to go out into the ring."

Emmalea said that without the Power of Women in Dairying scholarship, she would never have gone to WDE on her own.

"I had the best time. I got to do things I never thought I would do, like seeing the coloured shavings. I got to stand on the end of them while the cows were in the ring. That was so cool.

"Just seeing Shakira in her Supreme Champion rug after winning it all, just chilling, chewing her cud, being happy, was something I will never forget.

"The friendships I have made will last a lifetime. I don't think I could ever find another family like I have in America."

Emmalea has now joined the Power of Women in Dairy committee and will play her part in raising funds for the next scholarship recipient.

"I can't wait to promote it and get somebody else over to the World Dairy Expo. It's a once-in-a-lifetime opportunity and I am so grateful that I got to experience this. It has been the best couple of weeks of my life."

Emmalea shares more about her WDE on the 'Around the Barn' podcast. The next Power of Women event will be held at International Dairy Week 2024.





# Getting together to celebrate

Holstein Australia members and dairy enthusiasts enjoyed Holstein Highlights, held in Bunbury, WA, in September.

The WA Holstein Region welcomed guests to celebrate dairying in the region, which included farms walks at Carenda and Angelis Holsteins.

In a celebration of Holstein Australia member achievements, more than 75 people enjoyed the Annual Awards Dinner

at the Dolphin Discovery Centre – where Cow of the Year and All Australian Awards were presented. Along with five new Master Breeders and two Distinguished Service Award recipients.

Thank you to all attendees and to the W.A Holstein Region – particularly Lachlan Fry, Susanne and Phil Hall, Ray Kitchen and family and the Angi Family for their hospitality. **HJ**









# Biosecurity and sustainability: lessons from the UK dairy industry

BY ANDREW MCRAE

*Spike Genetics, East Gippsland*

As I fly home from an incredible UK exchange, I've been reflecting on some of the differences between UK and Australian dairy, with biosecurity and sustainability management being the big ones.

To keep producing and promoting dairy there is a need to meet new environmental requirements. In the UK, laws now restrict stocking rates on a nitrates per acreage system and there is increasingly strict effluent storage regulation and policing geared towards lowering farm emissions.

I can see similar measures being introduced in Australia, and while these will be a major curve ball for many, there is a necessity for them.

## Breeding programs

Across the UK, most farmers were using at least 95% sexed semen when breeding to Holsteins and using around 40% beef semen across their breeding programs.

A major reason for this is that the protocols with unwanted calves are much stricter. Housing unnecessary animals, as well as adding cost, impacts each breeder's legal stocking rate requirements.

Another key difference was in selection of bulls, with daughter fertility not being as critical as at home as most breeders calve all year round rather than trying to tighten seasonal calving.

I found Holstein UK's breeding information highly advanced and easily accessible. For example, farmers are now transitioning to genotyping whole herds using an ear tag that takes a skin sample when applied and provides a QR code that relates to the tag. All farmers have to provide is a birth date with the sample and the laboratory can register the pedigree from the information that the skin sample provides, tracing dam and sire through the genotyping system.

## My UK Tour

Holstein UK organised my itinerary around the key dairy show events of the year. I hit the ground running at UK Dairy Day



Andrew McRae (bottom left) joined the First Look Genetics team at the UK Dairy Day.

(UKDD) in Telford, the largest and most prestigious national Holstein show.

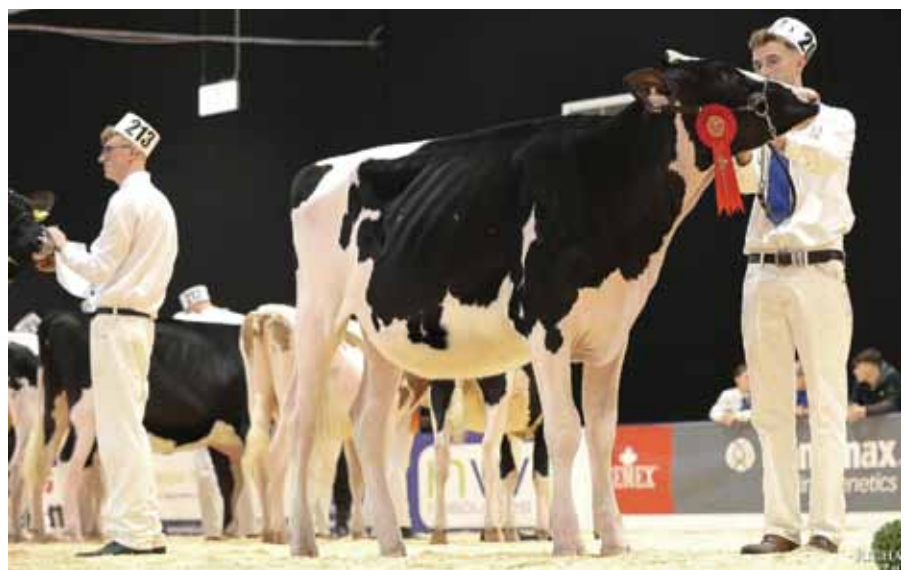
With the exhibitors settling in as I arrived, I joined the Firstlook Genetics team, a newly-established herd built up over the past three years by James and Steph Doherty, with their knowledge and experience fast-tracking breeding abilities through their herd.

Exhibiting seven Holsteins and one Jersey, I had a great few days with Firstlook. UKDD was a great networking event for breeders

and trade suppliers. Holsteins dominated the show from the youngest class – in calf heifers – through to mature age cows. Later in my travels it was great to spend some time on farm with the Dohertys and see their herd.

My first farm stay, just down the road from Telford, was a great introduction to the UK farming environment with Hallon Holsteins and the Tudor family.

Housing 230 milking cows year-round in sand-bedded cubicles, they calve all year



Heifer fitted by Andrew McRae winning her class at ABAB Show.



in a high-input system. The herd was in peak production while I was there, a mind boggling 43 litres per day on a twice daily milking platform.

It was truly incredible to take in the day-to-day workings of the farm, with the herd being managed by the Tudor's knowledgeable and talented 25-year-old daughter Pippa, with younger brother Tom managing the arable side of the farm. I look forward to following their journey as they convert to a robotic milking system.

My busy first week was followed by a relaxing sightseeing weekend in London with Naomi from Holstein UK. Next I travelled to the Baker family's BB Holsteins at Abergavenny, South Wales. Milking 300 cows, their commercial focus sees them breeding a smaller more versatile cow, which I saw as lower maintenance and like our breeding focus at home.

### Big sheds!

Next stop was the well-known Willsbro Holsteins at Cornwall, southwest England, working with Wendy Young and her team at Clipaholics in preparation for the Willsbro reduction sale of 350 live lots and a large consignment of embryos.

Willsbro is by far one of the largest single holding UK dairy farms, with 1,800 registered Holsteins milking year-round in a full-housed system. Milking through a 60-unit rotary system three times a day, the dairy was in operation for almost 20 hours daily.

The size of the facilities, attention to detail and tidiness right across their operation, from breeding program and feeding system to milking, was incredible. The same attention to detail was evident in the clipping team I joined, and over four days working together I made some great friends.

### Northern Ireland and Scotland

From Cornwall I flew to Northern Ireland (NI) to greeted by old friend, Andrew Patton, who I had met through the exchange program when he came to Australia in 2017. Andrew's family run a 200 cow Holstein herd under the prefix Ards Holsteins in Newtown Ards. Andrew also took me to see the sights of Belfast and the small seaside town of Newcastle.

I also spent a couple days with John McLean and his family who run a mixed-breed herd under the Priestland Farm prefix in the picturesque northern coastal



Andrew McRae (third from left) at Tarbolton Show with the Scott family, Nethervalley Holsteins. .

region of Bushmills. They've built a herd using some incredible imported cow families, including Australia's very own Bonnie family.

Nethervalley Holsteins in Ayrshire, Scotland was my first time working with robots, seeing the day-to-day pros and cons of working with the technology on a two-unit Lely robotic milking platform.

Milking 110 cows and calving year-round, Robbie Scott runs the farm with his two teenage sons who juggle school and college commitments with the dairy operation. Holstein youth is strong in this area. I experienced this first-hand at the local Tarbolton show with many local farmers supporting the breed and young farmers.

At Overside Holsteins in the Strathaven region, where they had recently sold 120 of their best in milk cows, I was blown away with the group of freshly calved two-year olds coming through their breeding program. From an original focus on breeding tall, extreme show cows, they have moved to breeding shorter more balanced neat-uddered cows with a more production orientated future.

### Bath and the All Breeds All Britain Show

As my trip drew to a close, I headed back to southern England and the Bath and west showgrounds for the annual dairy show where Holstein numbers were minimal, but the quality was exceptional. Helping Olly Read of Beaconhill Holsteins

we had one heifer and one milker to prepare, but with great results with the milker winning her class and taking out reserve champion cow.

From the show I went to Ben and Lizzie Yates' and the estate Ben manages, including a 400-cow commercial dairy platform. I helped prepare two of their heifers for the All Breeds All Britain (ABAB) show where I was allocated to the Lancashire team.

For ABAB, calves must qualify in their local county show and handlers must also qualify for their respective showmanship classes in the Holstein section, with the show attracting a huge 360 calves and 300 handlers, all under the age of 27.

With nine heifers and 10 members, the Lancashire team had great results with three heifers making the championship class. The event focused on building skills and a community for young breeders from across the UK. I was blown away by the way so many young people came together, expressing their passion for the breed and community, making everlasting connections here and throughout the Holstein Young Breeders program.

I would like to thank all the organisers of this scholarship that I can see will have a positive effect on my future, and to all the families and businesses who welcomed me with open arms into their lives. I strongly encourage all passionate young Australian farmers and Holstein breeders to apply for this life changing program. **HJ**

# Reflections on young breeders program

The 2023 Australian team for the Young Breeders School (YBS) in Battice, Belgium, share their experiences and learnings from this once in a lifetime opportunity.

"I was extremely honoured and excited to lead the Australian team to Young Breeders School Belgium this year. Growing up in the Netherlands, it was also very special to me to be able to show the team the way of farming on 'my' side of the world. I hope each of them has learned something about themselves as well, as this is an experience they'll look back on for many years to come."

– **Kelly Bleijendaal, team leader**

"My YBS experience was a once-in-a-lifetime opportunity that I used to develop my skills, make connections and learn from some of the best dairy leaders in the world. The 10-day round trip from Australia, not only saw us participate in the incredible YBS, but we also got to visit some of the best breeders' farms in Europe – where they offered their advice and knowledge on industry. The YBS pushed us to our limits and helped us gain a new sense of responsibility as we were forced to think ahead and plan like future leaders rather than just following instructions set out by others."

– **Kyella McKenna**

"The YBS surpassed all expectations – it really is a spectacular event! Personally, achieving a Bronze placing in my showmanship class was a special highlight of the trip, as was placing 15<sup>th</sup> overall. I



Angus Fraser received a Bronze medal in his Showmanship class.



The obligatory 'selfie' to mark the start of the YBS.

look forward to applying the teachings from this experience in my own career, but also using this experience as a way to have a positive flow on impact with fellow Australian dairy youth and the wider dairy industry."

– **Angus Fraser**

"Attending the YBS truly is the opportunity of a lifetime if you want to learn skills that will set you up for a career in dairying. I have gained so much knowledge in all aspects of showing cows. Being taught by some of the world's best fitters was such a privilege. We made so many new friends from around the world that we will forever cherish and who we look forward to connecting with on our travels in the future."

– **Rebekah Love**

"Our trip overall was very well rounded, with a combination of the learning and competition of the YBS and farm visits which provided a great insight into both sides of the commercial and stud dairy industry. Participating in the YBS was an eye-opening experience. It was fast-paced and the level of competition was impressive. It was lovely to meet people from all over the world. Personally, achieving the result of Bronze (3<sup>rd</sup>) in my showmanship class and 23<sup>rd</sup> overall was an amazing achievement."

– **Jess Eagles**



It was a Bronze medal for Jess Eagles in her Showmanship class in Belgium.

"My most valuable take-away from the YBS trip was the incredible knowledge of the mentors we had the privilege to work with. Their communication skills and how they presented everything to us as in such a clear way really meant we could take so much knowledge from what they were teaching that we can now apply ourselves."

– **Kieran Coburn**

The 2023 Australian Young Breeders School trip was driven by partners Holstein Australia and Jersey Australia with additional sponsorship from Genetics Australia, JEFO, Provico, Quality Breeding Services, Ridley Stockfeeds, St Genetics Australia and WFI.



Rebekah Love didn't shy away from hard work at the Young Breeders School.



# Alta Australia launches DOMESTIC SIRE PROGRAM

with Gleestar COIN MAKER

## Gleestar COIN MAKER

ROCKNROLL x KENOBI x QUANTUM  
NASIS: 05FFV25 | Reg: AUSM000H02217775  
DOB: 12.03.2022 | **A2A2** | **BB** | **95% Black**



<b>BPI</b>	<b>478</b>	<b>HWI</b>	<b>466</b>	<b>SI</b>	<b>819</b>
------------	------------	------------	------------	-----------	------------

<b>TYPE</b>	0 dtrs / 0 herds	Rel. 73%	(ABV August 2023)
-------------	------------------	----------	-------------------

Overall Type	<b>105</b>	Rear Set	96
Mammary System	<b>104</b>	Rear Leg Rear View	104
Feet & Legs	103	Udder Depth	104
Rump	100	Fore Attachment	104
Dairy Strength	101	Rear Attachment Height	104
Stature	102	Rear Attachment Width	102
Muzzle Width	<b>105</b>	Centre Ligament	102
Chest Width	<b>110</b>	Teat Placement (front)	102
Pin Width	101	Teat Placement (rear)	100
Pin Set	100	Teat Length	<b>106</b>
Foot Angle	101	Loin Strength	98

<b>PRODUCTION</b>	0 dtrs / 0 herds	Rel. 77%	(ABV August 2023)
Milk	54	L	ASI 207
Fat	34	kg	<b>+0.46 %</b>
Protein	21	kg	<b>+0.36 %</b>

<b>HEALTH</b>			
Cell Count	178	66	%R
Survival	110	53	%R
Dtr. Fertility	<b>111</b>	52	%R
Calving Ease	<b>102</b>	70	%R
Gestation Length	-2	62	%R

<b>WORKABILITIES</b>	0 dtrs / 0 herds	Rel. 65%
Milking Speed	<b>100</b>	
Temperament	<b>102</b>	
Likability	<b>103</b>	



"Coinmaker is a very unique sire, to me he ticks all of the boxes for traits that the commercial farmer is after. He is silky black, A2, BB, great components & fertility. His type traits are a feature, a chest width of 110, muzzle width of 105, teat length of 106 - traits which I believe the Australian Dairy Industry can certainly benefit from".

Jonathon Gleeson

Contact our Head Office on: (03) 8336 1458  
Or your local Alta Representative



Scan QR Code to hear from Jonathon Gleeson,  
breeder & owner of Gleestar Coinmaker

**Alta Australia Pty.**

info.au@altagenetics.com | australia.altagenetics.com | AltaGeneticsAustralia

## The Cuties – a modern source of sought-after historical traits

BY JON HOLLAND

With more than a century of selective breeding behind it, the Cutie family of Jonathon and Courtney Gleeson (Gleestar) has a well-established reputation for breeding longevity, persistency and productivity.

Since the October release of the AI sire Gleestar Coin Maker (Coinmaker), the bloodline is now being appreciated as a modern-day source of desirable traits such as longer teats, black coats, moderate stature and wider muzzles – traits highly sought after by farmers wanting easy care, robust and productive Holsteins.

Coinmaker is the first bull the Gleesons have bred that has been accepted to AI, and the first time in more than 10 years that Alta Genetics has tested a locally standing bull in Australia.

His immediate popularity among commercial dairy farmers has attracted new interest in the Cutie family, and an appreciation of the qualities that has allowed the bloodline to thrive over the decades.

Jonathon believes the success of Coinmaker demonstrates the value of breeding from deep maternal bloodlines, and said families like the Cuties have the structural base that has allowed them to pivot as breeding priorities evolve and new genomic traits are introduced.

“The Holstein breed needs diversity, and cow families that are built on a strong foundation have the ability to carry a diverse range of bulls,” Jonathon said. “I always believed that with the strength of the Cutie pedigree – something special would happen.”

### What was old is new again

The history of the Cutie family can be traced to the late 1800s to the foundation cow, Butterman Rosey II. Four generations later in 1915, Rosey 52<sup>nd</sup> of Lilydale was born on the outskirts of Melbourne for pioneer Holstein breeder David Mitchell. In 1962, Master Breeders Terry and



Jonathon, Courtney and Mia Gleeson, Gleestar Holsteins, Illwoa, Victoria.

Helen Williams bought a mature-aged descendant of Rosey 52<sup>nd</sup>, Grayholm Camelia VG89 2\*. Surviving into her early 20s, Camelia produced another 10 registered progeny at Marion Dale Holsteins, with her last calf born when she was 17-years-old.

Regular calving intervals and large numbers of female progeny became a family trademark, and by the mid-1970s, Camelia's descendants represented more than 20% of the Marion Dale herd.



Ingoldale's leading Star Brood Cows – Ingoldale Carnation VG85 STP 16\*, bred by Jim and Dot Gilmore, Ingoldale Holsteins, Yarrowalla, Victoria.

During this time, fellow Master Breeders, Jim and Dot Gilmore, Ingoldale Holsteins, were in search of progeny from the prized bull Ingolston Patrick Marshall, bred by Jim's father Ken and grandfather Thomas Gilmore (Ingolston). Patrick Marshall was a son of Australia's first Excellent cow, Ingolston Maryann EX-3E 1\*, with his early daughters sharing the characteristics that had made Maryann a highly sought after brood cow.

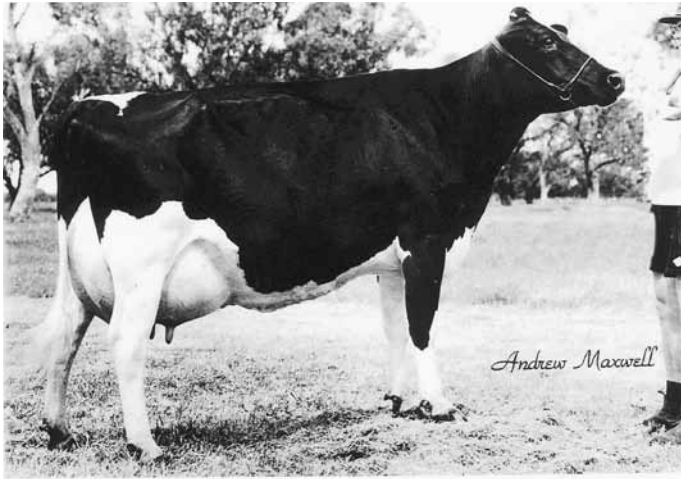
In 1981, Marion Dale hosted a sale featuring the 6-year-old Patrick Marshall daughter Marion Dale Camelia 25<sup>th</sup> VG87 3\*.

Jim was immediately attracted to her deep history and thought Camelia would be a perfect fit for his breeding program. He knew the Camelias were “great cows that consistently got better with age”, so decided to exceed his usual budget, spending \$2,700 to secure the sale.

Camelia 25<sup>th</sup> was pregnant at the sale to the sire Bellshill Model Count. Model Count was himself heavily linebred to Rosey 52<sup>nd</sup> – further concentrating the qualities of the family.

The pregnancy was a full sibling to one of Terry Williams' greatest-ever production cows, Marion Dale Camelia 40<sup>th</sup> VG86 STP Life4, who completed 13 lactations with a





**Champion Dairy Cow – Camperdown Show 1993, Ingoldale S.B. Cutie-ET VG89 5\* 1xM 1xF, bred by Jim and Dot Gilmore, Ingoldale Holsteins, Yarrowalla, Victoria.**



**Champion Dairy Cow, Camperdown Show 1992, Ingoldale S.B. Camelia-ET EX-4E STP 10\* 1xM Life1, bred by Jim and Dot Gilmore, Ingoldale Holsteins, Yarrowalla, Victoria**

lifetime record of 106,255 litres, 3,296 kg protein and 4,147 kg fat.

Camelia gave birth later that year to a heifer, Ingoldale Carnation VG85 STP 16\*. At 16 Stars, Carnation remains as Ingoldale's highest-rated brood cows – driven largely by the combination with the legendary Canadian sire Hanoverhill Starbuck.

### The magic cross

Carnation's impact on the Ingoldale herd was incomparable. To date, 30 descendants have reached Superior Total Performance Status, and 13 females classified Excellent.

"The Camelias were unbelievable cows. There was never a bad production one among them, yet they would last – often still milking into their teenage years," Jim said.

The repeated cross of Carnation with Starbuck produced 18 of her 32 registered progeny, featuring two Excellent daughters and four VG89, with five daughters awarded Superior Total Performance and Star Brood Cow status.

"Starbuck was magic for us," Jim said proudly. "All our Starbucks were great cows – good type, good udders and good to get along with. He was the best bull we ever used, and he and his sons left us lots of great brood cows."

Born in 1993, Ingoldale S.B. Calais-ET EX-90-1E STP 2\* Life3 produced 91,000 litres lifetime recorded across 11 lactations. She had one Excellent daughter, Ingoldale C.L Calais EX-90-2E STP Life 1, who, via Ingoldale L.J Calais VG88 STP(Silver) 1\* Life 1, produced the fourth generation

STP cow, Ingoldale Spec Calais EX-90-1E, owned by Andrew Freemantle (Mitchmantle).

Ingoldale S.B. Cyprus-ET VG89 STP Life1 and Ingoldale S.B. Cyclamen-ET VG86 were born from the first flush in 1986. They were sold as a "pick of the pair" at the Blue Lake Sale in 1987 to Master Breeder Frank Sorraghen (Rockwood Park).

Cyprus returned to Ingoldale as a mature cow, where she produced two Excellent granddaughters, Ingoldale T Cyprus EX-90-2E STP 4\* Life 1 and Ingoldale L.J Cyprus EX-91-2E STP.

Ingoldale S.B. Camelia-ET EX-4E STP 10\* 1xM Life1 was the only Excellent from the first flush. According to Jim, she was one of the best representations of the true-type Holstein he has ever seen and the greatest cow he ever bred.

"S.B. Camelia was so incredibly correct," he said. "She just kept getting better and better every year. Her udder was soft as silk and she developed so much capacity and had the best rump of all the Starbuck daughters."

S.B. Camelia produced three consecutive lactations exceeding 10,000 litres and more than 79,000 litres lifetime with a lifetime average PI of 124.

Her daughter, Ingoldale T.E. Camelia VG89 STP 1xM 1xP Life 1, produced 84,472 litres lifetime, and was the granddam of a fifth generation STP cow, Ingoldale Durham Camelia EX-90-5E STP(Silver) 3\* Life3.

In 1992, S.B. Camelia was crowned Champion Dairy Cow at the Camperdown Feature Show. She also stood beside her ET full sister, Ingoldale S.B. Cuddles-ET VG87 STP 2\* as the winning progeny

pair, helping Ingoldale Holsteins take the Premier Breeder and Premier Exhibitor banners.

Cuddles returned to Camperdown in 1993 to again win the progeny pair – this time with another ET full sister, the 1993 Camperdown Champion Dairy Cow, Ingoldale S.B. Cutie-ET VG89 5\* 1xM 1xF. Of all the Starbuck sisters, Cutie stamped herself as the production powerhouse with a top lactation as a 6-year-old of 781 kg milks solids from 10,607 litres with a herd leading PI 135.

She was admired for her silky, black, open frame earning her EX-93 for dairy strength – traits she consistently passed onto her progeny, along with her strong will to milk. Cutie became the foundation behind three consecutive generations of Lifetime Award producers – Ingoldale R.P. Cutie EX-3E STP 4\* Life 1, Ingoldale Zenith Cutie VG89 STP(Silver) Life1 and Ingoldale Design Cutie EX-90-1E 2xM 1xP Life 1.

Jim doubled-down on Starbuck blood when he flushed S.B. Cutie to a Starbuck son, Hanover-Hill-SS Clyde. Ingoldale SC Cutie-ET VG86 classified VG as a young cow, before she was sold to a dairy farming couple from the Western Districts, Rob and Michelle Lumsden, Strathspey Holsteins.

The Lumsdens did not classify their cows, however they maintained the registrations and continued using top quality sires to expand the Cutie bloodline.

### Good genetics come to the fore

During the early 2000s, the Lumsdens employed a local dairy farmer's son as a relief milker – a young Jonathon Gleeson. As a gift for his 21<sup>st</sup> birthday, they gave

# Australian Holstein Cow Family

him a heifer calf from their Cutie family, Strathspey Bolton Cutie VG86. She became the foundation cow for Jonathon's herd.

In 2023, Jonathon and his wife Courtney milk 230 registered Holsteins on their newly settled farm at Illowa, just outside of Warrnambool on Victoria's south-west coast.

Since the move, Jonathon says he's enjoying the fertile soils, the coastal climate and reliable rainfall, while Courtney is appreciating the closer proximity to her work in agribusiness, and the accessibility of daycare and kindergarten for their 3-year-old daughter Mia.

The 80-hectare Illowa farm features 60 ha of permanent white clover and ryegrass pastures irrigated using three travelling irrigators with access to 400 megalitres of bore water. Jonathon plans to replace the existing infrastructure with centre pivots to save on labour, and to capitalise on the improved pastures and rich volcanic soils.

The herd has transitioned well since arriving at the new farm, producing close to 152,000 kg milk solids last season at a 660 kg milk solids per cow average.

The Gleestar herd once peaked inside the top 10 BPI (Balanced Performance Index) herds in the country, with Jonathon prioritising bulls with a balanced stature to strength ratio, positive for milk solids and overall production, high fertility and a diverse sire stack.

His philosophy in breeding is to always use good bulls across the herd and "allow the



Jonathon Gleeson, Gleestar Holsteins with Gleestar Fedora Cutie VG88.

good genetics to come to the fore."

"The Cutie family is a good example of that," Jonathon said. "They have multiplied really well without any flushing, and are consistently 90% or more black with really good udders. Even with the different branches that are starting to form – they keep coming up on top."

## Foundation cow

The foundation, Strathspey Bolton Cutie VG86, was a deep-bodied cow who classified EX-90 for dairy strength. She had a peak lactation as a 3-year-old of 710 kg milk solids with a PI 109.

Her calf as a maiden heifer by Probstland Ernesto proved to be her only daughter. Fortunately for the Gleesons, the Ernesto developed into an exceptional individual, and the cornerstone of the Cutie family at Gleestar.

Gleestar Ernesto Cutie EX-90-4E was an impressive, open-framed, high-performance individual with an EX-92 mammary. She peaked at a top lactation of 666 kg milk solids PI 106 the same year she placed 8<sup>th</sup> in her class during the Western Districts On-Farm Challenge.

"Ernesto Cutie was just a medium-sized cow – but was really silky with plenty of middle," Jonathon said. "She was basically a better version of her dam with the big deep body – but with a nicer udder."

A cross to Siemers Mogul Pety produced the daughter Gleestar Pety Cutie VG86. According to Jonathon, Cutie Pety was a little taller than her Ernesto dam, but with a similar snug udder and an extreme fat test averaging 5.45% on her third lactation.

The snug, soft textured udder was also passed onto Cutie Pety's daughter, and one of Jonathon's current favourites in the herd, the 3-year-old Gleestar Kenobi Cutie 323.

A granddaughter of Pety Cutie, Gleestar Zazzle Cutie 372, boasts a BPI+391, and combines strong genomic values across all health and production traits. Like many of the Cuties, Zazzle Cutie 372 scores well for rump composite, shallow udders and super teat length +109, with an overall type of +107.

Just ahead of her on BPI is another Peak AltaZazzle daughter, Gleestar Zazzle Cutie 364. Like her paternal sister, Zazzle Cutie 364 demonstrates excellent values for teat length, udder depth, pin set and chest width, but with a slight advantage for cell count +176, daughter fertility +114 and survival +110.

Both Zazzles are due to calve again in April, and Jonathon says he is enjoying



**Gleestar Ernesto Cutie EX-90-4E, bred by Jonathon and Courtney Gleeson, Gleestar Holsteins, Illowa, Victoria.**





Gleestar Kenobi Cutie 323, bred by Jonathon and Courtney Gleeson, Gleestar Holsteins, Illowa, Victoria.

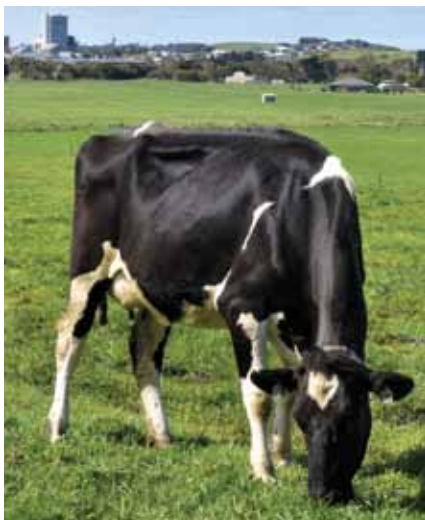
watching them develop through their first lactation.

“They are the type of young cows that just need time,” he said of the Zazzle 2-year-olds. “They’re both pretty tidy and have everything in the right place. They are the type that will be around for quite a long while.”

Among the current showpieces of the Gleestar herd is Gleestar Fedora Cutie VG88. She is the dam of Zazzle Cutie 364, and a granddaughter of the Ernesto via her dam, Gleestar Uno Cutie VG86.

According to Jonathon, Fedora Cutie has always been a standout, and when the Holstein classifier visited in October, they had no hesitation in moving the 4-year-old Fedora Cutie to VG88 on her third lactation.

“She’s got heaps of middle to her, plenty of capacity, and is always out feeding,” Jonathon said. “She’s also got a bit more



Gleestar Kenobi Cutie GP84, bred by Jonathon and Courtney Gleeson, Gleestar Holsteins, Illowa, Victoria.

height to her rear udder than most and a really good rump structure.”

Jonathon says the classification scores is also reflected in Fedora Cutie’s genomic data with strong values for muzzle width, chest width and loin strength alongside positive values across the board for her udder traits.

The less visible traits such as daughter fertility +111, survival +110 and cell count +176, give an even broader picture of Fedora Cutie’s breeding potential.

### Cashing in on Coinmaker

The dam of Coinmaker, Gleestar Kenobi Cutie 318 GP84 was identified at an early age as “something special”. According to Jonathon, her genomic values “ticked all the boxes”, boasting favourable scores for calving ease +103, cell count +177, daughter fertility +108 and chest width of +104.

Most notable for Jonathon was her score of +107 for teat length.

“She had positives for all the traits most dairy farmers are asking for these days,” Jonathon said. “Like me, they are looking for a medium stature cow with great longevity who doesn’t need any special treatment to keep doing what they’re doing.”

As a 3-year-old, Kenobi Cutie 318 classified GP84 with VG86 for mammary and dairy strength.

Jonathon took a gamble and mated the Kenobi as a yearling to conventional semen instead of sexed, choosing the high BPI and health trait specialist, Westcoast RocknRoll.

## Cutie family tree

**Marion Dale Camelia 25<sup>th</sup> VG87 3\***  
10/10/1975

(Ingolston Patrick Marshall GP)



**Ingoldale Carnation VG85 STP 16\***  
BPI -381 14/11/1981

(Bellshill Model Count VG)



**Ingoldale S.B. Cutie-ET VG89 5\* 1xM 1xF**  
BPI -102 26/01/1987

(Hanoverhill Starbuck EX)



**Ingoldale SC Cutie-ET VG85**  
BPI -176 09/08/1993

(A Hanover-Hill-SS Clyde)



**Strathspey Outside Cutie**  
BPI -122 02/08/2000

(Comestar Outside EX)



**Strathspey Modesto Cutie**  
BPI -168 11/07/2005

(Sikkema-Star-W Modesto)



**Strathspey Bolton Cutie VG86**  
BPI -71 03/03/2009

(Sandy-Valley Bolton EX)



**Gleestar Ernesto Cutie EX-90-4E**  
BPI +75 03/05/2011

(Probstland Ernesto)



**Gleestar Uno Cutie VG86**  
BPI +147 27/07/2014

(Amighetti Numero Uno)



**Gleestar Quantum Cutie 211**  
BPI +247 12/03/2018

(De-Su 13181 Quantum)



**Gleestar Kenobi Cutie 318 GP84**  
BPI +362 09/03/2020

(De-Su 14222 Kenobi)



**Gleestar Coin Maker (MALE)**  
BPI +478 12/03/2022

(Westcoast Rocknroll)

The combination was a success, with the resulting bull calf Coinmaker currently the only sire available in Australia with a BPI greater than +450 that also boasts genomic values greater than +105 for both teat length and chest width.

Jonathon attributes Coinmaker’s success to the breeders of the past, and said their unique ability to combine specific bloodlines was responsible for advancing the traits that were important to commercial dairy farmers.

“I feel I am cashing in with Coinmaker a bit, because a lot of the hard work was done decades ago. It was the breeders of the past that set a really good platform for what I have to work with now.” **HJ**

# Triumphant return for Barron Bella

After several years absence, the Cuda family and their Barron Bella Holsteins made a triumphant return to the Semex On Farm Challenge when their 4-year-old Barron Bella Crushabull Daisy 9292 was awarded the highest pointed cow in the Queensland State Final by judge Daniel Holmes.

Daniel said the 4-year-old class was possibly the strongest of the competition, but he found Daisy an obvious choice.

“She’s just so balanced, so stylish and so clean down through the leg with beautiful dairy bone,” he said.

“She has lovely texture to her udder, a beautiful fore attachment and lovely high and wide rear udder – she gets to the top of this class quite easily.”

Barron Bella is a family operation based out of Malanda in far north Queensland. Three generations actively work the farm, with Frank and Dawn Cuda leading the operation milking 280 Holsteins with their sons Mark and Phillip and their families.

Mark confessed it took some coercing by their local Semex rep Karen Polson to convince him to enter the competition this year.

“Karen absolutely deserves 100% of the credit,” he said. “We had other things going on and weren’t going to worry – but she encouraged us to get back into it.”

Daisy is a member of the world-famous Apple family, descending from a maternal sister to the popular AI sire Mr D Apple Diamondback.

Mark said even as a calf, Daisy was a “real head-turner”, catching the attention of many guests that had visited their farm over the years.

“She’s bigger than she looks, yet she’s a really balanced animal,” he said proudly. “She’s the kind of cow that, even from a distance, makes you stop and ask ‘who is that?’”

Mark said Daisy is maintaining her exceptional dairy form despite being quite advanced in her lactation.

“It’s her texture that got her to the top. She has a big, wide rear udder with veins everywhere, from the top of her udder all the way down.”



Queensland OFC Champion Barron Bella Crushabull Daisy 9292, bred by the Cuda family, Barron Bella Holsteins, Malanda, Queensland.

As a trouble-free cow, boasting plenty of eye-catching style, Mark said Daisy fits well with his breeding program at Barron Bella.

“It’s no good having high producing cows that are falling apart – but there’s no point in having a ‘pretty’ cow if she doesn’t give any milk,” he insisted. “Still – nobody wants to stand behind and put cups on an ugly cow.”

Over recent years, Mark has taken a more balanced approach to his breeding program and shifted his focus on

improving production while maintaining a strict benchmark for daughter fertility and mastitis resistance.

“It is extremely important to us – average is not good enough,” he said. “It doesn’t matter how many ribbons they win, or how many milk buckets they can fill – if they’re not in calf, or their milk is getting tipped down the drain, then no one is making a dime.”

HJ

Queensland		
<b>Judge:</b> Daniel Holmes, Arabella Holsteins, Brookstead, Queensland		
<b>Champion:</b> Barron Bella Crushabull Daisy 9292, Cuda Family, Barron Bella Holsteins, Malanda, Queensland		
Class	First	Second
2-year-old	RJs Chief Becky, Paulger & R Nelson, RJS Holsteins, Kenilworth, Queensland	Barron Bella Lambda Fairy 1010, Cuda Family, Barron Bella Holsteins, Malanda, Queensland.
3-year-old	Ourway Dropkick Jackie, CJ & SJ Daley, Ourway Holsteins, Millaa Millaa, Queensland.	Kaloola Corvette Lee-OC, TK & LM Northfield, Kaloola Holsteins, Tatham, NSW.
4-year-old	Barron Bella Crushabull Daisy 9292, Cuda Family, Barron Bella Holsteins, Malanda, Queensland.	Gilabils Gatedancer Roachie, WH & CJ Stewart, Gilabils Holsteins, Canningvale, Queensland.
5-year-old	Kaloola Solomon Christmas-ET, TK & LM Northfield, Kaloola Holsteins, Tatham, NSW.	Adadale Bardo Kimberley, Paulger Family, Adadale Holsteins, Kenilworth, Queensland.
Mature 6+	Kaloola Brady Liz, TK & LM Northfield, Kaloola Holsteins, Tatham, NSW.	Kearla A Apple Tiffany, Paulger & R Nelson, RJS Holsteins, Kenilworth, Queensland



# SA dam and daughter reign supreme

After a dominant showing at the Adelaide Royal in September, the dam and daughter combination of Benlargo Elijah Ding EX-90-1E and Benlargo Alligator Ding VG85 has taken top honours in the South Australian Semex On Farm Challenge State Finals.

Exhibited by Ben and Angela Tweddle and family of Benlargo Holsteins, the 6-year-old Elijah Ding retained her Royal winning form, crowned overall State OFC Champion for 2023 under judge Jim Strong of Strongbark Holsteins, NSW.

This was Jim's first time travelling around South Australia, and he was grateful for the hospitality he received, and the excellent presentation of the entries throughout the competition.

He said there were great cows in every class, and that the opportunity to judge has given him a greater appreciation for the event, and the role it plays within the breeding industry.

"Getting to see different ways of farming and how passionate people are, and the number of great cows that farmers are able to present in such great form – I realise now how important this competition is."

Jim said he was looking for a cow that was deep and open in the rib with plenty of width and bloom to their rear udder – qualities he found in his Champion.

"Pretty much from the time I saw her I knew she'd be hard to top," he said. "She was a cow that basically puts it all together – so long and hard topped, wide through her pins and very clean down through her hocks and thighs. And she had a great textured udder that was really high and wide with a well attached fore udder."

He gave Ding the advantage for her extra lactations and superior length of frame over the 4-year-old Jervois Chill Lassie VG86 in Reserve. Exhibited by the Mason family of Jervois Holsteins, Lassie is backed by 2-generations of VG89 dams to the 2002 Royal Melbourne and Royal Adelaide Champion, Rockwood Park Singing Lassie EX-1E 2\*.

In his wrap-up, Jim highlighted the winning 2-year-old and the many qualities



SA OFC Champion Benlargo Elijah Ding EX-90-1E, bred by Ben and Angela Tweddle, Benlargo Holsteins, Glencoe, SA.

she shared with her champion dam.

"She won the class against some pretty classy competition," Jim said of Alligator Ding.

"She has a terrific wide rump and very high and wide rear udder, and cuts a pretty similar picture as her mother. I think she's certainly a young cow that has got a big future."

The Ding family has been renowned for decades for its OFC and showing success, with Alligator Ding an 11<sup>th</sup> generation VG or Excellent.

For breeder, Angela Tweddle, the continued success of her Dings after their Adelaide campaign is simply a greater appreciation of the qualities she sees in her cows every day.

"You don't see a dam and daughter combo like this very often," she said. "It's even harder to get a daughter that is just as good if not better than her dam – especially when her dam is already an exceptional cow."

"They are just made correctly," she said proudly of her Ding cows. "They don't need any special treatment – they just do it themselves and get on with it."

Now on her 4<sup>th</sup> lactation after recovering from her second set of twins, Angela said Elijah Ding has never looked better.

"She is the kind of cow that develops more and more into her lactation," she said. "She keeps filling out through her rib and frame. And she's just so balanced, and milks so well she never looks stale." **HJ**

## South Australia

**Judge:** Jim Strong, Strongbark Holsteins, Tongarra, NSW

**Champion:** Benlargo Elijah Ding, B & A Tweddle, Benlargo Holsteins, Glencoe, SA

Class	First	Second
2-year-old	Benlargo Alligator Ding, B & A Tweddle, Benlargo Holsteins, Glencoe, SA	Robsvue Crushabull Piper, R & R Walmsely, Robsvue Holsteins, Myponga, SA
3-year-old	Avonlea Undenied Buttercup-ET, A & A Koch, Glenunga Holsteins, Maculta, SA	Robsvue RU Barb, R & R Walmsely, Robsvue Holsteins, Myponga, SA
4-year-old	Jervois Chill Lassie, C & F Mason, Jervois Holsteins, Tailem Bend, SA	Glenunga Doc Buttershot, A & A Koch, Glenunga Holsteins, Maculta, SA
5-year-old	Windy Vale Jacot Bonnie, C & K Royans, Windy Vale Holsteins, Myponga, SA	Glenunga Crush Eb, A & A Koch, Glenunga Holsteins, Maculta, SA
Mature 6+	Benlargo Elijah Ding, B & A Tweddle, Benlargo Holsteins, Glencoe, SA	Jervois Chels Courtney, C & F Mason, Jervois Holsteins, Tailem Bend, SA
Matriarch	Jervois 5G Concorde 2nd, C & F Mason, Jervois Holsteins, Tailem Bend, SA	Glenunga Attorney Hayley, A & A Koch, Glenunga Holsteins, Maculta, SA

# Reigning WA champion retains title

Retaining her mantle for yet another year was the Western Australian Semex On Farm Challenge reigning champion, Carenda Mainevent Vanda 1\* EX-90-2E 3xM 2xF 2xP.

Bred from the mighty 'V' family of Carenda Holsteins by two-time Master Breeders Ray and Donna Kitchen, the now 8-year-old Vanda was the WA Champion for 2022, the National Champion for the Virtual Holstein Spectacular in 2021, and returned in perfect form in 2023 to demonstrate why she was again the unbackable favourite.

This year was WA's largest On Farm Challenge showing with more than 130 entries.

Judge Olivia Millhouse praised her champion for her overall correctness, her clean dairy bone, the silkiness of her hide, and her superior mammary system.

"I like balanced dairy cows with very few faults and quality udders," Olivia said. "My champion was the type of cow I was looking for. When you analyse her parts, she has very few faults. Her rear profile was incredible and the spring to her rib was phenomenal. The more you look at this cow – the more you appreciate how good she really is."

Olivia also acknowledged Vanda's age, saying she has an extra appreciation for cows that have proven themselves by calving regularly and given a lot of milk over multiple lactations.

"She's a fifth lactation cow and her udder is still well above her hocks. You really have to admire a cow like this."

Vanda recently surpassed 70,000 litres lifetime, and is the 4<sup>th</sup> consecutive generation to reach this milestone. She has produced 9,000 litres in just 200 days on her current lactation, after finishing last year at 13,454 litres and 907 kg milk solids.

This year Vanda's breeding values jumped by 50 BPI points to +426, and features +110 for mammary.

Her son, Carenda Sondalo, added his first milking daughters to his proof during the August 2023 ABV release, rising to BPI +587, making him the number 1 Holstein for BPI in Australia. Sondalo's full brother,



Western Australia OFC Champion, Carenda Mainevent Vanda EX-90-2E 3xM 2xF 2xP.

Carenda Tirano is also adding milking daughters to his data.

Breeder Ray Kitchen has high hopes their proofs will hold firm, and said it reflects the confidence he has in this cow family, and the confidence shown by the many farmers who have been using his bulls in their breeding programs.

"Vanda has produced sons that could offer a lot to the industry. As a breeder, it's pretty exciting to see your genetics spread near and far, and having an influence on the wider dairy population," Ray said.

Ray hopes Vanda can share her superior qualities via her sons, as they are the traits he believes most dairy farmers are looking for.

"I think every dairy farmer desires a cow that will last, and continues to look good lactation after lactation," he said. "Vanda is very correct and very balanced. She's not too extreme in size and stature with enough capacity, without being imposing."

"She has a nice open rib with a quality udder with plenty of texture and very sound feet and legs, and she's holding together nicely after five calves."

Ray has left Vanda open and will start her on a flush program soon. He is hoping she will respond better to the program when she is stale in her lactation, though admits it unfortunately means she will be out of form to challenge her OFC title in 2024 and go for the Makybe Diva of three in a row. **HJ**

## Western Australia

**Judge:** Olivia Millhouse, Southwick Holsteins, Tasmania

**Champion:** Carenda Mainevent Vanda, Kitchen Farms, Carenda Holsteins, Boyanup. WA

Class	First	Second
2-year-old	Moonaralla Radio 9272, Ravenhill Pastoral, Moonaralla Holsteins, Narrikup, WA	Katandra Park Moovin Oaklyn, DM & LM Fry, Katandra Park Holsteins, Brunswick Junction, WA
3-year-old	Logue 20117, Harvey Ag College, Logue Holsteins, Harvey, WA	Katandra Park Sidekick Lula, DM & LM Fry, Katandra Park Holsteins, Brunswick Junction, WA
4-year-old	Brampton Park PDC Mags, RB & H Mountford & Son, Brampton Park Holsteins, Rosabrook, WA	Hayes Fastbreak 9029, Hayes Farms. WA
5-year-old	Moonaralla Callan Bonnie 7156, Ravenhill Pastoral, Moonaralla Holsteins, Narrikup, WA	Treeton Estate June, GA & LE Jenkins, Treeton Holsteins, Cowaramup. WA
Mature 6+	Carenda Mainevent Vanda, Kitchen Farms, Carenda Holsteins, Boyanup. WA	Acero Solo B Rae, Rodwell Farms, Acero Holsteins, Boyanup. WA



# The most complete cow crowned

The coveted Jim Conroy award for the Victorian On Farm Challenge Supreme Champion went to the 5-year-old Instyle Doc Amy EX-92-1E, bred by Western Victoria's Brenton and Ellie Thomas, Instyle Holsteins.

The judge, Ben Govett of Tandara Holsteins and Brown Swiss, said finding a champion among the exciting line-up of youthful intermediates and strong selection of mature cows was a difficult decision.

"The quality of the cattle in the competition was exceptional," he said. "Each class winner was a great example of the high quality of the Australian Holstein."

According to Ben, his champion needed to show she could be profitable in the long term, but also look good at the same time.

"I wanted a cow that showed overall dairy strength and dairy quality," he said. "I wanted a cow that moved about freely, and a cow with a well-attached udder – particularly fore udder. For me, the 5-year-old was the most complete cow of the competition."

Ben praised Doc Amy's depth of frame, the spring to her rib, and her superior mammary system.

"My overall winner was a powerhouse of a cow with fantastic dairy strength and capacity and very impressive udder attachments," Ben said. "She was long and wide and very dairy with a huge muzzle and open nostril, showing tremendous ability to produce and consume forage."

"She was a cow that was giving a lot of milk while holding her form. She had the advantage over the older cows in the competition for her overall udder quality and height and strength of attachments."

Ben said he was particularly struck by the winning 2-year-old, Gorgala Arrow Charcoal VG87, exhibited by Chad and Kristen Gordon, Tongala, Northern Victoria.

"There was some really strong competition among the younger cows. There were a number of entries that I think have a big future, but just couldn't match the dairy strength and maturity of my champion."

Doc Amy won the 4-year-old class in the



Instyle Doc Amy EX92-1E, B.E. & R. Thomas, Instyle Holsteins, Cooriemungle, Victoria.

Western Districts On Farm Challenge the last year. She placed third in a strong class of senior 3-year-olds at IDW and was Reserve All Australian 3-year-old in 2022.

Her breeder, Brenton Thomas, believes she is in even better form this year, with plans to show her at IDW again in January 2024.

He said Doc Amy is a great example of his favourite cow family, boasting the exceptional dairy strength, udder quality and will-to-milk that has made it the dominant bloodline at Instyle Holsteins.

Brenton and his wife Ellie bought their property four years ago, milking 200 cows on the fertile slopes of Cooriemungle in Victoria's south-west. Since the move, the young couple have been working hard

to build the genetic base of the herd, introducing recognisable bloodlines such as the Tonis, Perfections and Chassitys.

The Amys were a family Brenton brought with him, stemming from a cow his father Rod bought in the early 2000s, Philro Aerox Amy VG88 2\*.

Of the 30 classified Amys at Instyle Holsteins, to-date eight have classified Excellent alongside a significant number of young VG members that have the potential to score higher in the future.

Doc Amy classified EX-92-1E in September on her third lactation. She is a third generation Excellent, and one of four Excellent daughters of the prolific brood cow, Instyle Lauthority Amy EX-92-3E 4\* 1xF.

HU

## Victoria

**Judge:** Ben Govett, Tandara Holsteins, Victoria

**Champion:** Instyle Doc Amy, B.E. & R. Thomas, Instyle Holsteins, Cooriemungle, Victoria

Class	First	Second
2-year-old	Gorgala Arrow Charcoal, C.B. & K.E. Gordon, Gorgala Holsteins, Tongala, Victoria	Foxdale Chief Lila, A. & K. Chesworth, Foxdale Holsteins, Tocumwal, NSW
3-year-old	Calivil Park Unstoppable Nugget-RED, D.E. & S.K. Culton, Calivil Park Holsteins, Nathalia, Victoria	Attaview Lambda Amy 5, E., A. & R. Attenborough, Attaview Holsteins, Poowong North, Victoria
4-year-old	Tamscott King Doc 6112, W.B. & F.G. & B.A. Loughridge, Tamscott Holsteins, Poowong North, Victoria	Hillview Park Diamondback Vee, G.G. & J.D. McPhee, Hillview Park Holsteins, Finley, NSW
5-year-old	Instyle Doc Amy, B.E. & R. Thomas, Instyle Holsteins, Cooriemungle, Victoria	Dryfield Bradnick Shamlee, Munden Farms, Munden Farms Holsteins, Nilma North, Victoria
Mature 6+	Warramont Diamondback Fondue, N. & M. & S Wilkie, Parwan, Victoria	Hill Valley Gold Lustre, R. & H. Perrett, Hill Valley Holsteins, Kongwak, Victoria

# Mature cows battle it out for top spot

After a week travelling around the state, the NSW State On Farm Challenge ended in a contest between the two mature cows, Arrallik Atwood Candy 2-ET EX-93-4E, exhibited by Cameron and Ashley Yarnold (Arrallik), and Rissmore Doorman Annice-IMP-ET EX-90-1E exhibited by the Murray family (Rissmore).

Both cows left an impression on the Western Australian judge Lachlan Fry, who praised them for their overall capacity and youthful mammary systems.

Lachlan gave Candy the advantage for having three extra lactations over her rival.

“She is a flat-out dairy cow with extreme dairy strength,” Lachlan said. “I love her wedge and the openness of her rib, and for an aged cow to carry her udder so well after seven calves is a real credit.”

He said Candy was the type of cow that draws you in by her imposing frame and capacity.

“From her front, you’re struck by the width of her muzzle and the beautiful breed character to her head. Then you discover how many calves she’s had, and see the strength of her udder attachments – they just don’t make cows like this enough anymore.”

Lachlan enjoys the on-farm format as he believes it allows breeders to submit their more mature-aged cows that may be passed their prime for the show ring, but are still deserving of recognition.

“We need to reward cows like this that have stood the test of time. These are profitable cows and should be recognised.”

He also believes the OFC is particularly important for states like NSW and Queensland whose dairying regions are separated by thousands of kilometres, which limits the capacity of breeders to effectively compete in a show ring environment.

“We travelled over three and a half thousand kilometres from as far south as the Bega Valley to the Dorrigo region in the north,” he said. “This competition brings all these breeders and all these cows into one group, which is pretty amazing.”



NSW OFC Champion, Arrallik Atwood Candy 2-ET EX-93-4E, exhibited by Cameron and Ashley Yarnold, Arrallik Holsteins, NSW.

Lachlan said it is a privilege to be asked to judge such an important competition, and commended the efforts of the exhibitors for the presentation of their cows.

“It is such a unique opportunity to visit all the farms and see the best cows in the state. You never usually get to see the countryside like that, and there are so many exceptionally good cows in NSW.”

Atwood Candy is a third generation Excellent, and one of three Excellent daughters of Strongbark Jasper Candy 2<sup>nd</sup>-ET EX-90-1E 6\*, back to the two-time All Australian and 1997 Sydney Royal

Champion Strongbark Broker Candy-ET EX-3E 24\* 1xEP 1xP.

She began her show career at local calf days, and was named 3<sup>rd</sup> in the All Australian in 2016. She has since been a consistent performer for the Yarnolds with repeat appearances at the NSW State Show, Sydney Royal and the Victorian Winter Fair.

Candy has also featured regularly among the top placings of the OFC, with her last champion’s title as a 6-year-old in 2021.

Her second OFC NSW State Champion crown is just another in her long list of prestigious accolades. **HJ**

## New South Wales

**Judge:** Lachlan Fry, Katandra Park Holsteins, WA

**Champion:** Arrallik Atwood Candy 2-ET, Yarnold Family, Arrallik Holsteins, Killawarra, NSW

Class	First	Second
2-year-old	Juleanwes BDS Posch, W.J. & J.L. Brown, Juleanwes Holsteins, Tamworth, NSW	Marloo Pharo Rebecca, M.D & P.M Gray, Marloo Holsteins, Rolland Plains, NSW
3-year-old	Tomargo Recluse Pharo Marvel, S.D & E.G Chesworth, Tomargo Recluse Holsteins, Dubbo, NSW	Juleanwes Devour Berlin, W.J. & J.L. Brown, Juleanwes Holsteins, Tamworth, NSW
4-year-old	Galba Emilio Jo, Christopher Allen, Rockstar Holsteins, Cobargo, NSW	Silvermere Tatoo Peplamond, Silvermere Holsteins, Cowra, NSW
5-year-old	Eclipse Doc GD Mae-ET, S.J & L.J Coombes, Kallula Park Holsteins, Attunga, NSW	Mosleigh Jacot Sylvia-Red, R.O Wilson, Mosleigh Holsteins, Jamberoo, NSW
Mature 6+	Arrallik Atwood Candy 2-ET, Yarnold Family, Arrallik Holsteins, Killawarra, NSW	Rissmore Doorman Annice-IMP-ET, W.J Murray & Sons, Rissmore Holsteins, Conjola, NSW



# OFC discovers a new champion

The Semex On Farm Challenge has unearthed yet another champion in the Tasmanian winner Barostin Reginald Megan 316 VG89, exhibited by Marcus Young, Datumvale Holsteins.

The relatively unknown 10-year-old was bred by Roger and Barbara Stinchcombe of Simpson in western Victoria. Marcus first met the Stinchcombes while judging the local On Farm Challenge just a few years before their dispersal. He was blown away by the consistency of the Barostin cows and their square dairy frames.

“The herd was so awesomely even. Every cow I saw was a big, open ribbed type of cow,” Marcus said of the Stinchcombes’ herd. “These guys were clearly doing something right.”

When the herd dispersed in October 2015, Marcus sent his friend Peter Dickson, from Semex, to the sale with instructions to select for him a young cow to ship over the Strait to his Datumvale herd at Ridgley, along Tasmania’s north west coast.

Peter chose the 2-year-old Regancrest Reginald daughter of Barostin Igniter Megan EX-91-2E 2xM 1xF 1xP for \$2,500.

It was a bloodline developed through the appendix system – but the unknown pedigree did not deter Marcus.

“She was a neat young cow and had an Excellent dam. You could see she had the potential to make something,” he said. “That’s the best part about the on farm competition – it’s discovering herds and cows like this.”

Since arriving in Tasmania, Megan has produced a daughter by Farnear Altitude and twin daughters by Walnutlawn Solomon. Her most recent calf was in June as a 10-year-old – and Marcus says she has never looked better.

“She’s not a young cow – but she looks like a young cow,” he said. “She’s developed a massive frame, with great depth of rib and chest, and still very youthful in her udder. Just an outstanding cow really.”

It was this combination of youthfulness and dairy strength that appealed to judge Brett Cirillo of Ambrewlea Holsteins.



Tasmanian OFC Champion, Barostin Reginald Megan 316 VG89, exhibited by the Young family, Datumvale Holsteins.

“My overall champion showed the perfect blend of dairy strength and power,” Brett said, praising Megan for her body depth and superior width of chest and fore rib.

“She displayed the ideal length of head and neck, and a wide muzzle, and was amazingly balanced for a cow of her size,” he said. “She also had a very youthful and well attached udder for a cow of her maturity. She’s a credit to her breeder and owner – they should be very proud.”

According to Brett, cows like Megan demonstrate how breeding for the true-type model will produce cows with type, longevity and production, while maintaining

the integrity of the Holstein breed.

“It is what all Holstien breeders should aspire to.”

Brett said he thoroughly enjoyed his first OFC judging appointment, and hopes it is an opportunity he will experience again soon.

“I travelled over one thousand kilometres, judged more than 150 cows, met some very passionate cow people, and saw some awesome herds of cows,” Brett said of his time in Tasmania.

“Thank you to Semex and the Holstein Tasmania crew for having me. I’ll definitely be back one day for a visit.” **HJ**

Tasmania		
<b>Judge:</b> Brett Cirillo, Ambrewlea Holsteins, Victoria		
<b>Champion:</b> Bariston Reginald Megan 316, Young family, Datumvale Holsteins, Ridgley, Tasmania		
Class	First	Second
2-year-old	Southwick Chief Rose, Millhouse family, Southwick Holsteins, Riana, Tasmania	Datumvale Tatroo Nila, Young family, Riana, Datumvale Holsteins, Ridgley, Tasmania
3-year-old	Dial View Undenied Fox, M Radford & R Millhouse, Dial View Holsteins, Riana, Tasmania	Datumvale Absolute Lynn, Young family, Riana, Datumvale Holsteins, Ridgley, Tasmania
4-year-old	Datumvale Awesome Lynn, Young family, Riana, Datumvale Holsteins, Ridgley, Tasmania	Dial View Chill Peppa, M Radford & R Millhouse, Dial View Holsteins, Riana, Tasmania
5-year-old	Cradleview Octane Connie, K, T & J Walters, Cradleview Holsteins, Kindred, Tasmania	Southwick Beemer Princess, Millhouse family, Southwick Holsteins, Riana, Tasmania
Mature 6+	Bariston Reginald Megan, Young family, Riana, Datumvale Holsteins, Ridgley, Tasmania	Dial View Bess, M Radford & R Millhouse, Dial View Holsteins, Riana, Tasmania



# Classification Tour results

## 21/08/2023 to 10/11/2023

### Central & Western NSW

#### PATRICK J BUCKLEY

EX-92-2E Avonlea Stanley Cup Portrait-ET 5 Lact.

#### GAVANA HOLSTEINS

EX-90-1E Gavana Absolute Rose-RED-MFF-CNF-DPF-XIF-BLF 8 Lact.

EX-90-1E Gavana Carnival Lady 9 Lact.

### Dorrigo-Kempsey NSW

#### P D, P & R L FARLEY

EX-90-1E Farley Grove Notley 622 4 Lact.

EX-90-2E Farley Grove Unique 202 5 Lact.

#### WADE FRANCIS

EX-90-1E Kaloola Shotdes Liz 6 Lact.

#### N BOOKER & A MARKS

EX-94-5E Leader Shottle Sugar 10 Lact.

EX-92-5E Instyle Super Bernita 8 Lact.

#### B A & S E MCGINN

EX-91-1E Coral Hill O Meg 3 Lact.

EX-90 Coral Hill Jacot Midas-RED-CNF-DPF-BLF (MALE) 4.2Y

EX-90-1E Coral Hill Ketchupp Candy 5 Lact.

VG85 Coral Hill Talent Columbia-RED 1L 3.1Y

### Far North Coast NSW

#### CLARK PARTNERSHIP

EX-91-1E Instyle Diamond Shimmer 2 5 Lact.

EX-91-2E Clarkdale Defiant Bronze 6 Lact.

EX-90-1E Clarkdale Fever Logan 5 Lact.

VG85 Clarkdale America Lovett 1L 3.4Y

#### T K & L M NORTHFIELD

EX-92-2E Kaloola Iota Bunty 8 Lact.

EX-91-1E Kaloola Awesome Christmas 3 Lact.

EX-91-2E Kaloola Dempsey M Beatrice 5 Lact.

EX-91-2E Kaloola Dempstrex Liz 4 Lact.

EX-90-1E Kaloola Brady Liz 6 Lact.

EX-90-1E Kaloola Brewmaster Betty 5 Lact.

EX-90-1E Kaloola Corvette Beetroot 4 Lact.

EX-90-1E Kaloola Darryl Rae 6 Lact.

EX-90-1E Kaloola Dorcy C Betty 7 Lact.

EX-90-1E Kaloola Eudon Belinda 3 Lact.

EX-90-1E Kaloola Fever B Meg 8 Lact.

EX-90-2E Kaloola Corvette Bunty 4 Lact.

VG86 Kaloola Corvette Ls Charm 1L 3.7Y

VG85 Arabella Chief D Betsy 1L 2.2Y

VG85 Kaloola Artist L Rae 1L 3.8Y

VG85 Kaloola Artist Ul Rae 1L 2.5Y

VG85 Kaloola Tatoo DI Betty 1L 2.8Y

VG85 Kaloola Tatorcy C Betty 1L 2.9Y

VG85 Kaloola Too Betty-TWIN 1L 3.3Y

### Far South Coast NSW

#### A J ALLEN

EX-93-2E Galba Axe Dutchlady 2nd 7 Lact.

#### CHRISTOPHER ALLEN

VG85 Rockstar Skyhigh Cranberry 1L 2.7Y

#### DARREN & SHARON PARRISH

EX-90-1E Darradale Harper Wilma 1284 4 Lact.

### PROGRESSIVE HOLSTEINS

EX-91-1E Progressive Windbrook Aubrey-IMP-ET 6 Lact.

### WARWICK FARM ENTERPRISES

VG85 Warwick Farm Mirand Prize 3-PO 1L 3.5Y

### Hunter Valley NSW

#### HASSETT FAMILY

EX-91-3E Strongbark Att Larissa 6 Lact.

EX-91-3E Strongbark Goldchip Lavish-IMP-ET 7 Lact.

EX-90-1E Murribrook Reginald Mandy 4 Lact.

EX-90-1E Murribrook Solomon Peggy-ET 3 Lact.

EX-90-1E Tomargo Recluse Shoe Gaelic 4 Lact.

EX-90-2E Bluechip Wood Whynot 5 Lact.

VG85 Strongbark Connor 299 1L 2.10Y

VG85 Strongbark Crushabull Candy 1L 3.8Y

VG85 Strongbark Tatt Geo 1L 2.10Y

VG85 Strongbark Ts Debbie 1L 2.8Y

#### MR & EJ NEILSON

EX-90-1E Strathmara Jack Pride 5 Lact.

### A RICHARDSON-HOUGH & M R ROOD

EX-92-2E Murribrook Goldsun Toni 5 Lact.

EX-90-1E Whitegold Brokaw Satin-ET 5 Lact.

EX-90-1E Whitegold Fancy Gsun 6 Lact.

EX-90-1E Whitegold Medallion Satin 3 Lact.

EX-90-1E Whitegold Royal Daimonds 3 Lact.

EX-90-1E Whitegold Salt Maid 3 Lact.

EX-90-1E Whitegold Satin Inred-ET-RED 7 Lact.

EX-90-1E Wyoming Brazzlestar Daisy 5 Lact.

EX-90-1E Wyoming Dorcy Mary 6 Lact.

EX-90-2E Whitegold Cor Satin 5 Lact.

VG86 Whitegold Unstopabull Satin-RED 1L 3.2Y

VG85 Chessybrook Medallion Candice 1L 3.0Y

VG85 Whitegold Diamond Ellie 1L 2.9Y

VG85 Wyoming Kingdoc Dixie 1L 2.8Y

VG85 Wyoming Mirand Pomette-PO 1L 2.9Y

### A RICHARDSON-HOUGH & M R ROOD & C C & J

COCHRANE VG85 Whitegold Pg Unstopable Tequila 1L 2.11Y

### A RICHARDSON-HOUGH & M R ROOD & MOXEY FARMS PTY LIMITED

VG85 Whitegold Miranda Satin-ET-PO 1L 3.0Y

### A S R SHEARER & SON

EX-91-3E Wyoming Secondbrook Blackie 6 Lact.

EX-91-2E Wyoming Diamondback Blackie 4 Lact.

VG86 Wyoming Tatoo Sally 1L 2.9Y

### TALGARTH PARTNERSHIP

VG85 Fordwich Silvio Daisy 1L 2.7Y

### Manning NSW

#### O P DALEY & B K BRATFIELD

EX-91-1E Promenade Aftershock Cleo 4 Lact.

EX-90-1E Miss Alexander Dellia 6 Lact.

EX-90-1E Myway Windhammer Toni 5 Lact.

#### CHRIS & BRENDAN BUTLER

EX-90-1E Budgeree Acme Jordy 3-ET-RED 6 Lact.

EX-90-1E Buttlervale Halak Onessie 5 Lact.

### A J & C L COOMBES

EX-90-1E Fleyas Bradnick Bunny-ET-MFF-CNF-DPF-XIF-BLF 5 Lact.

EX-90-1E Maryland Lucrative Rose 5 Lact.

EX-90-1E Maryland Reggie Nancy 6 Lact.

### C R COWAN

EX-91-3E Juleanwes Field Dita 6 Lact.

EX-90-1E Budgeree Mainevent Lautamia-ET 6 Lact.

EX-90-1E Budgeree Solomon Frosty 4 Lact.

EX-90-3E Budgeree Loaded Butterkorn 6 Lact.

EX-90-3E Eclipse Atwood W Paradise-ET 6 Lact.

VG85 Budgeree Kingdoc Dita 1L 3.3Y

### C R & D EMERTON

EX-90-1E Regemo Steady Marcell 9 Lact.

### GW & K M FORBES

EX-91-1E Barrington View Air Maggie 6 Lact.

EX-91-2E Barrington View Punch Alice 4 Lact.

EX-90-1E Barrington View Aftershock 5287 6 Lact.

EX-90-1E Barrington View Halak Dell 5335 7 Lact.

EX-90-1E Barrington View Jazz Julie 6850 3 Lact.

EX-90-1E Barrington View Marty Bertha 5 Lact.

EX-90-2E Barrington View Altaiota Kristal 4450 8 Lact.

EX-90-2E Barrington View Shottle Renae 7 Lact.

### MD & P M GRAY

EX-91-2E Marloo Policy Samantha 7 Lact.

EX-90-1E Marloo Kody Fern 5 Lact.

EX-90-1E Marloo Leap Hazel 5 Lact.

EX-90-4E Bowthorne Kirra Mulga 10 Lact.

EX-90-4E Golden Valley Shottle Trillpearl 8 Lact.

VG85 Marloo Pharo Rebecca 1L 2.5Y

### P M HURRELL

EX-91-2E Springwood Park Impression Kriss 5 Lact.

EX-90-1E Springwood Park Envious Pansy 4 Lact.

EX-90-1E Springwood Park Novo Apple 4 Lact.

EX-90 Springwood Park Unicorn (MALE) 6.3Y

EX-90-1E Springwood Park Uno Shona 3 Lact.

EX-90-1E Wyoming Jacot Brema-RED 3 Lact.

EX-90-3E Springwood Park Impression Dianne 5 Lact.

VG85 Springwood Park Ardor Goldie 1L 3.5Y

### KILLARRA PARK

EX-90-3E Killarra Park Goldsun Loma 9 Lact.

EX-90-2E Killarra Park Policy Jewel 8 Lact.

VG85 Killarra Park Capital Gain Cressy 1L 2.6Y

### P A & R J LATHAM

EX-90-1E Cedarcrest Dalton Ace 5 Lact.

EX-90-1E Cedarcrest Loaded Silky 4 Lact.

EX-90-1E Cedarcrest Steady Supreme 5 Lact.

### AD & Z R POLSON

EX-90-1E Oxley Vale Super Piebe 5 Lact.

EX-90-3E Oxley Vale Future Susie-CNF-DPF-BLF 7 Lact.

### MURRAY POLSON

EX-92-2E Mario Park Atwoods Alicia-ET 5 Lact.

EX-90-1E Mario Park Aftershock Satin-ET 6 Lact.

VG85 Mario Park Alicias Tatoo 1L 2.9Y

### RIVERSIDE PARK HOLSTEINS

EX-90-1E Lightning Ridge Wh Dback Licorice-ET-CNF-DPF-BLF 4 Lact.

EX-90-1E Riverside Park Advent Cherry-IMP-ET-RED 5 Lact.

EX-90-1E Riverside Park Advent Missy-IMP-ET 7 Lact.

VG85 Lightning Ridge Wv Jacoby Calli-IMP-ET 1L 3.6Y

VG85 Riverside Park Artist Stephanie 1L 3.2Y

### CAMERON YARNOLD

EX-93-4E Arrallik Atwood Candy 2-ET 7 Lact.

EX-90-1E Arrallik Windbrook Meg-ET 5 Lact.

EX-90-1E Oxley Vale Quality Nona 4 Lact.

EX-90-3E Arrallik Goldwyn Meg-ET 8 Lact.

EX-90-2E Arrallik Diamondback Meg 4 Lact.





## Murrumbidgee NSW

### P CLARKE

EX-90-1E	Coomboona Snowman Sheenta-IMP-ET	8 Lact.
EX-90-2E	Ettagamah Holheros Becie	8 Lact.

### S R & P A CLARKE

EX-90-1E	Kyeamba Colheros Pam	9 Lact.
EX-90-2E	Kyeamba Masterpiece Karen	7 Lact.

### K N & S K JOLLIFFE

EX-90-1E	Currajugle Mogul Golden 2288	6 Lact.
EX-90-1E	Currajugle Super Golden 1897	9 Lact.
EX-90-2E	Currajugle Mascalese Toyane 2141	6 Lact.
VG85	Currajugle True Story Sugar 3023	1L 3.3Y

### J W & S V O'SULLIVAN

EX-90-1E	Rosewood Brazzle Martha	5 Lact.
EX-90-3E	Rosewood Latrobe Hanna	11 Lact.
VG85	Rosewood Darcy Felicity 4th	1L 3.0Y

## N.England & N. West NSW

### K L & M A ATKINS

EX-90-1E	Kenmar Uno Celeste-TWIN	3 Lact.
EX-90-2E	Kenmar Sid Rose	4 Lact.
VG85	Kenmar Bridgestone Cadillac	1L 2.6Y
VG85	Kenmar Mirand Fussy-PO	1L 3.2Y

### W J & J L BROWN

EX-91-2E	Juleanwes Reginald Dita	6 Lact.
EX-90-1E	Juleanwes 1st Grade Dita	3 Lact.
EX-90-1E	Juleanwes Broke Fiona	4 Lact.
EX-90-1E	Juleanwes Buxton Tame	6 Lact.
EX-90-1E	Juleanwes Control Fiona	4 Lact.
EX-90-1E	Juleanwes Sydney Dita	6 Lact.
VG85	Juleanwes Bsd Posch	1L 2.3Y
VG85	Juleanwes Diamond Posch	1L 2.3Y
VG85	Juleanwes Sully Posch	1L 2.7Y

### COOMBES PARTNERSHIP

VG85	Brombin Park Cinder Ford 20	1L 2.6Y
------	-----------------------------	---------

### ANDREW GREEN

VG85	Kirk Andrews Anakin Cinderella 2069-CNF-DPF-BLF	1L 2.8Y
------	---	---------

### S J & L J COOMBES

EX-91-1E	Andes Rhoda Lass	4 Lact.
EX-91-1E	Eclipse Alltheaway Princess-ET	3 Lact.
EX-90-1E	Andes Mogul Crissy	3 Lact.
EX-90-1E	Gorbo Crushlm Shimmer	4 Lact.
EX-90-1E	Halscott Octane Lilly	4 Lact.
EX-90-1E	Wallaroi Fitz Shelby	5 Lact.
EX-90-1E	Wallaroi Unstopabull Ivy	3 Lact.
EX-90-1E	Willette Dreams Mercedes	4 Lact.
VG85	Kalulla Park Bradnick Portia	1L 3.5Y
VG85	Murribrook Chief Muriel	1L 2.10Y

### WOODLAND PARK

VG85	Lightning Ridge Wsmr Kingdoc Lust-ET	1L 2.2Y
------	--------------------------------------	---------

## South Coast & Tablelands NSW

### BOSCAWEN HOLSTEINS

EX-90-1E	Boscawen Beemer Queen 7708	3 Lact.
EX-90-1E	Boscawen Doorman Sugarbaby 7418-IMP-ET	5 Lact.
VG85	Boscawen Moovin Lotus 8894	1L 2.11Y

### CASSAWARRY HOLSTEIN

VG85	Cassawarry Crush Frosty	1L 2.7Y
------	-------------------------	---------

### CRAWFORD FAMILY

EX-91-4E	Bluechip Goldwyn Frosty-IMP-ET	7 Lact.
EX-91-3E	Coolea Aftershock Debutante	6 Lact.
EX-91-2E	Coolea Fever Trish	5 Lact.
EX-90-1E	Coolea Bradnick Noni	3 Lact.
EX-90-1E	Coolea Sheikh Brownie	3 Lact.
EX-90-1E	Coolea Windy Misty	5 Lact.

EX-90-1E	Horizon Atwood Lisa	4 Lact.
EX-90-2E	Arabella Fry Whisky	4 Lact.
EX-90-2E	Hullabaloo Aftershock Leona 7355	7 Lact.
VG86	Arabella Appleback Betsy	1L 3.2Y
VG85	Coolea Doc Ambrosia	1L 2.8Y

### A F GARRATTY P/L

VG85	Glenalbas Diamondback Alison-ET	1L 3.1Y
VG85	Glenalbas Dundee Tessie	1L 3.3Y

### MCINTOSH FARMING PARTNERSHIP

EX-92-1E	Woodside Park Bolton Blossom	7 Lact.
EX-90-1E	Woodside Park Atley Fawn	6 Lact.
EX-90-1E	Woodside Park Goldwyn Betsyann-ET	5 Lact.

### MIRVONA DAIRIES

EX-90-1E	Broughton Solomon Safina	4 Lact.
----------	--------------------------	---------

### W J MURRAY & SONS

EX-91-1E	Rissmore Goldsun Sally 4th	7 Lact.
EX-90-1E	Rissmore Archival Sally 3rd	3 Lact.
EX-90	Rissmore Chip-RED-PC (MALE)	5.7Y
EX-90-1E	Rissmore Doorman Annice-IMP-ET-CNF-DPF-XIF-BLF	4 Lact.

### CHRISTOPHER RUSSELL

VG85	Brunellen Park Moovin Hailey 8787	1L 3.1Y
------	-----------------------------------	---------

### SEA BREEZE HOLSTEINS PTY LTD

EX-93-3E	Sea Breeze Shottle Fussy	9 Lact.
----------	--------------------------	---------

### JIM STRONG

EX-90-1E	Strongbark Crush Noni-ET-CNF-DPF-BLF	4 Lact.
----------	--------------------------------------	---------

### SUNNYVIEW DAIRIES PTY LTD

EX-90-1E	Calderwood Equation Val	6 Lact.
----------	-------------------------	---------

### MR P TIMBS

EX-90-1E	Tara Dairies Concord Alexandra	3 Lact.
EX-90-1E	Tara Dairies Markedly Charm	5 Lact.
EX-90-1E	Tara Dairies Solstice Katie	3 Lact.
EX-90-2E	Tara Dairies Laurento Lady	6 Lact.
VG85	Tara Dairies Huron Georgia	1L 3.0Y

### D & M WALKER

EX-91-1E	Clinton Park Apoll Aline	5 Lact.
EX-90-1E	Clinton Park Alliance Rainbird	5 Lact.
VG85	Clinton Park Rubels Delvene-RED	1L 2.6Y

### C P & S J WALSH & FAMILY

EX-90-2E	Cumberoona Atwood Aleese	5 Lact.
EX-90-2E	Waljasper Doorman Suzette-ET	6 Lact.

### J F & E A WALSH

EX-90-1E	Kamilaroi Rabo Cilla	4 Lact.
----------	----------------------	---------

### C & W WATTS

EX-90-1E	Pyree Trev Clara	7 Lact.
VG85	Pyree Bardo Peachie	1L 2.5Y

### R O WILSON

EX-91-4E	Cedar Vale Rr Maida	9 Lact.
EX-90-1E	Mosleigh Dempsey Taylor	4 Lact.
EX-90-1E	Mosleigh Golddust Princess	5 Lact.

## South West Riverina NSW

### L A & C M CHESWORTH

EX-90-1E	Willette Eudon Alison-ET-MFF-CNF-DPF-XIF-BLF	4 Lact.
EX-90-1E	Willette Unix Alison 15-ET-CNF-DPF-XIF-BLF	4 Lact.

### CINNAMIN PARTNERS

EX-92-2E	Avonlea-Yf Windbrook Cinnamon-ET	4 Lact.
----------	----------------------------------	---------

### ELOORA PASTORAL CO

EX-90-1E	Aroona Beemer Desiree 3435-ET	3 Lact.
----------	-------------------------------	---------

### FLANAGAN FARMS

EX-90-1E	Wood Lawn Lenux 7676	3 Lact.
EX-90-1E	Wood Lawn Pepper 5778	6 Lact.

### G G & J D MCPHEE

EX-90-1E	Paringa Action Manner	7 Lact.
----------	-----------------------	---------

### DANIEL WALLIS

EX-90-1E	Evergreen Goldchip Jocular	6 Lact.
----------	----------------------------	---------

## Atherton & North Queensland

### PAUL & MARY NEWLAND

EX-91-4E	Foothills Talent Dusted	7 Lact.
----------	-------------------------	---------

## Burnett Queensland

### I C & J SCOTT

EX-91-1E	Glenerriffe Dude Chrissy	4 Lact.
VG85	Glenerriffe Bronco Milly	1L 2.10Y
VG85	Glenerriffe Licorice Chris	1L 2.7Y

## Darling Downs Queensland

### W H & C J STEWART

EX-90-1E	Gilabils Gatedancer Roachie	3 Lact.
----------	-----------------------------	---------

## Moreton Queensland

### G S & R W TEESE

EX-92-3E	Glencrest Jeeves 760	9 Lact.
EX-91-4E	Glencrest Spirte 842	7 Lact.
EX-91-3E	Glencrest Norman 841	8 Lact.

## Fleurieu & Central South Australia

### ALTMANN FARMS

EX-92-2E	Blackwood Park Upright Shelley 7796	4 Lact.
EX-90-1E	Blackwood Park Bradnick Nina 7740	4 Lact.
EX-90-1E	Blackwood Park Elude Bess 7706	5 Lact.
EX-90-1E	Blackwood Park Octane Sylvia 7864	4 Lact.

### BILLABONG HOLSTEINS PTY LTD

EX-90-1E	Swonbank Galop Audacious	4 Lact.
----------	--------------------------	---------

### BRETT M FIEBIG

EX-93-6E	Warrabell Blade Lucky-TWIN	9 Lact.
EX-92-3E	Warrabell Lumi Lucky	7 Lact.
EX-91-3E	Warrabell Wyman Lady	6 Lact.
EX-91-2E	Mooway Smokin Laverne 2	6 Lact.
EX-90-2E	Grantley Baxter Gretchen	8 Lact.
VG86	Warrabell Sidekick Luck-ET	1L 3.0Y

### GLENUNGA PROPRIETORS

EX-91-5E	Glenunga Windbrook Buttersage	7 Lact.
EX-90-1E	Glenunga Brazzle Glitzy	5 Lact.
EX-90-1E	Glenunga Crush Eb	3 Lact.
EX-90-1E	Glenunga Shout Festiva	9 Lact.

### R P HERRMANN & CO

VG85	Clardale Kingdoc Joeann	1L 2.4Y
------	-------------------------	---------

### BRIDGET LIEBELT & G W LIEBELT

EX-90-1E	Grantley Solomon Flora-ET	3 Lact.
----------	---------------------------	---------

### C G & F D MASON

EX-90-1E	Jervois Byway Charm	4 Lact.
EX-90-1E	Jervois Chels Courtney	4 Lact.
EX-90-1E	Jervois Damion Winnie 2nd	8 Lact.
EX-90-1E	Jervois Reginald Telstar	6 Lact.
EX-90-1E	Jervois Sanchez Brittany	8 Lact.
EX-90-1E	Jervois Talent Gretchen 12th-TWIN-RED	8 Lact.
EX-90-2E	Jervois 5g Gillian	6 Lact.
EX-90-2E	Jervois Attidge Gretchen 4th	5 Lact.
EX-90-2E	Jervois Destry Concorde 3rd	8 Lact.
EX-90-2E	Jervois Fever Concorde	5 Lact.
VG85	Jervois Golden Courtney-RED	1L 3.0Y

### MISTY BRAE HOLSTEINS PTY LTD

EX-90-1E	Misty Brae Deductive Bridget	5 Lact.
EX-90-1E	Misty Brae Heztry Shandy	4 Lact.
VG85	3378-CNF-DPF-BLF	1L 2.8Y
VG85	Misty Brae Tadoo Shandy-CNF-DPF-BLF	1L 2.7Y

### ANDREW PACITTI

EX-90-2E	Empire Dempsey Pearl	6 Lact.
----------	----------------------	---------



## CLASSIFICATION

### PARINGA VIEW PARK

EX-90-5E Edge Goldsun Cassie 2 7 Lact.

### PRIME SA

EX-91-2E Jervois Reginald Gillian 7 Lact.

EX-90-1E Jervois Breeza Gretchen 8 Lact.

EX-90-1E Primeacres Hercules Hallie 5 Lact.

EX-90-3E Jervois Aftershock Winnie 3rd 7 Lact.

### ROCKWELLA FARM HOLSTEINS

EX-91-2E Rockwella Farm Eudon Jewel 5 Lact.

EX-90-1E Edenburg Berryhill Taze 5 Lact.

EX-90-1E Rockwella Farm Diamond Antha 2 7 Lact.

EX-90-3E Rockwella Farm Dynamic Morn 6 Lact.

EX-90-2E Rockwella Farm Razor Jewel 5 Lact.

### C J & K A ROYANS

EX-90-1E Windy Vale Jacot Bonnie 3 Lact.

### D R & E D ZWECK

VG85 Donava Bentley Milly 1L 2.7Y

VG85 Donava Solar Squamish 1L 2.10Y

## South Eastern South Australia

### BENLARGO HOLSTEINS

EX-93-3E Byrne Lea Bradnick Jacobonia 7 Lact.

EX-91-1E Benlargo Elijah Ding 4 Lact.

EX-91-3E Benlargo Bolton Sue 8 Lact.

EX-90-1E Benlargo Breeza Peach 8 Lact.

EX-90-1E Benlargo Hammer Hanna 5 Lact.

EX-90-1E Benlargo Press Ding-ET-MFF-CNF-DPF-XIF-BLF 6 Lact.

EX-90-1E Glenleigh Krusader Pippy 6 Lact.

EX-90-2E Benlargo Dreams Dawnette-IMP-ET-MFF-CNF-DPF-XIF-BLF 6 Lact.

VG85 Benlargo Alligator Ding 1L 2.2Y

VG85 Benlargo Bridgestone Sharon 1L 2.5Y

VG85 Benlargo Sidekick Leanne 2 1L 2.0Y

VG85 Benlargo Silvio Toppy 1L 2.11Y

### WESTDAMA HOLSTEINS

EX-91-2E Westdama Ambfavour Posch 10 Lact.

EX-91-2E Westdama Wiconsin Desert-RED 9 Lact.

EX-90-1E Westdama Endstory Posey 6 Lact.

EX-90-2E Westdama Finalcut Echo 11 Lact.

## Tasmania

### C R THOMPSON

EX-90-1E Quamby Brook Aftershock Mandy 3 Lact.

## East Gippsland Victoria

### LYNDESEY HEATH & MITCHELL FLEMMING

EX-90-3E Cypress Grove S45 California Redrose-RED 6 Lact.

VG85 Impression Stop Azaelea-RED 1L 2.2Y

VG85 Impression Unstop Merlot-RED 1L 2.0Y

VG85 Q Bee Altitude Poppy-RED 1L 3.2Y

### GALLRAE HOLSTEINS

EX-91-4E Gallrae Taber Eileen 996 9 Lact.

EX-91-2E Monyip 4331 7 Lact.

VG85 6382-CNF-DPF-BLF 1L 2.7Y

### W E & M J & T W HENRY

EX-94-4E Wilara Buddha Trace-MFF-CNF-DPF-XIF-BLF 7 Lact.

EX-91-1E Wilara Jodallian Kiss 5 Lact.

EX-90-2E Wilara Silver Request 5 Lact.

EX-90-2E Wilara Supershot Erica 6 Lact.

## North-Eastern Victoria

### ADLEJAMA HOLSTEINS

EX-90-2E Adlejama Dimaggio Felicity 3112 6 Lact.

EX-90-2E Adlejama Jumpon Tanya 3114 5 Lact.

VG85 Adlejama Shaydon Carly 3670-CNF-DPF-BLF 1L 2.4Y

### I D & A M HOLLOWAY

VG85 Gundowring Maebull 8647 1L 2.4Y

### PRICE HILL PTY LTD

VG85 Bluff Glen Triga Ripple 3070 1L 2.11Y

## North-Western Victoria

### BELRUE FARMS

EX-91-1E Sky View Mogul Elegance 4 Lact.

EX-91-2E Lightning Ridge Awesome Liza-IMP-ET 5 Lact.

EX-90-3E Elm Banks Sid Lyn-ET 5 Lact.

VG86 Belrue Chief Felicity 1L 2.2Y

VG85 Belrue Chief Lilly 1L 2.1Y

### C B & K E GORDON

EX-92-2E Gorgala Crush Hope 4 Lact.

EX-91-1E Gorgala Maverick Cretonne-ET 3 Lact.

EX-91-2E Gorgala Awesomered Tiff-ET 4 Lact.

EX-91-2E Gorgala Sheath Tiffany-CNF-DPF-BLF 6 Lact.

EX-90-1E Avonlea Doorman Alana-ET 3 Lact.

EX-90-1E Gorbro Rob Cretonne 6 Lact.

EX-90-1E Gorgala Cali Crush Eva 3 Lact.

EX-90-1E Gorgala Crush At Berline 3 Lact.

EX-90-1E Gorgala Crushm Cretonne-ET 5 Lact.

EX-90-1E Gorgala Heath Jean 4 Lact.

EX-90-1E Gorgala Kimball Snowy 4 Lact.

EX-90-1E Gorgala Maverick Patty 4 Lact.

EX-90-1E Gorgala Shoorman Thumbelina 3 Lact.

EX-90-2E Gorbro Dorcy Patty 6 Lact.

VG87 Gorgala Arrow Charcoal 1L 2.6Y

VG86 Elmar Arrow Jessica 4738-ET-CNF-DPF-BLF 1L 2.6Y

VG86 Gorgala 1st Grade Jode 1L 2.6Y

VG86 Gorgala 1st Grade Ruby 1L 3.1Y

VG86 Gorgala Arrow Cretonne 1L 2.5Y

VG86 Gorgala Lambda Unbelievable-ET-CNF-DPF-BLF 1L 2.5Y

VG85 Gorgala Arrow Chrissy 1L 2.5Y

VG85 Gorgala Arrow Shimmer 1L 2.6Y

VG85 Gorgala Dg Nh Arrow Cretonne 1L 2.4Y

VG85 Gorgala Lambda Rose 1L 3.6Y

VG85 Gorgala Sidekick Kassie 1L 2.5Y

VG85 Gorgala Sidekick Perfume 1L 2.4Y

VG85 Gorgala Twister Wattle 1L 2.5Y

### JARED & COURTNEY IRELAND

EX-92-1E Redmaw Freddie Jaffa 8 Lact.

### K B CASH FAMILY TRUST

EX-90-1E Haven View Solomon Dalashi-ET 4 Lact.

EX-90-3E Andes Glauco Secret 7 Lact.

### SS & C L MODRA

EX-91-2E Avalon Palermo Josephine 7 Lact.

EX-90-1E Avalon Pitbull Mandy-RED 4 Lact.

EX-90-3E Avalon Baxter Rowena 10 Lact.

### QUINNER HOLSTEINS

EX-90-1E Hillview Park Buxton Maida 7 Lact.

### R J & R N ROBINS

EX-92-2E Kayton Montross Amanda 4 Lact.

EX-91-3E Avalon Bradnick Amanda 6 Lact.

EX-90-1E Kayton Windbrook Irene 4 Lact.

### MICHAELA THOMPSON

EX-90-1E Sunrise Diamondback Rosie 3 Lact.

## Northern Victoria

### P R ALLOTT

EX-90-1E Waltopso Aftershock Jacko 6 Lact.

EX-90-1E Waltopso Choice Johanne-PO 4 Lact.

EX-90-1E Waltopso Lavan Johanna 3 Lact.

EX-90-1E Waltopso Lj Casper 3 Lact.

EX-90-1E Waltopso Wr Rosa 3 Lact.

VG85 Waltopso Doors Tulip 1L 2.7Y

VG85 Waltopso Fever Betsy 1L 2.6Y

### G B & M M ANDERSON & FAIRVALE HOLSTEINS

EX-94-4E Fairvale Baxter Josie 64-ET 9 Lact.

### DAVID ASHE

VG85 Taravale Rubels Destiny 8458-RED-CNF-DPF-BLF-PO 1L 2.1Y

### DARYL CORDY

EX-90-2E Peppermint Vale Aftershock Posch 5 Lact.

JASMINE CORDY & DARYL CORDY

VG86 Stormvale Crushtime Dakota 1L 3.1Y

### MATTHEW DANIEL

EX-90-1E Temple Stud Mvp Honey 3 Lact.

### FRED & SONYA DE CICCO & SONS

EX-90-1E Benevento Park Golddust Tammy 4th 4 Lact.

EX-90-1E Benevento Park Reginald Viviana 2nd 5 Lact.

### R K EASTERBROOK

EX-91-2E Paringa Guthrie Niarre 4 Lact.

### MR BRUCE FULLER

VG85 Avonlea First Grade Kay 1L 2.3Y

### NEIL W GOODFELLOW

EX-90-1E Gowerville Shadow Dorothy 6 Lact.

### M L HARVEY

EX-92-3E Cherribah Shot Olive 8 Lact.

EX-90-1E Cherribah Reginald Noni 5 Lact.

EX-90-1E Gapsted Reginald Duchess 4 Lact.

EX-90-2E Cherribah Awesome Olive 4 Lact.

VG85 Cherribah Milano Maureen 1L 2.6Y

### J M HISCOCK & SONS

EX-92-5E Brurob Moon Petite 8 Lact.

EX-91-2E Brurob Reginald Princess 8 Lact.

EX-90-1E Brurob Undenied Starlite 3 Lact.

VG85 Brurob Stchief Betsyann 3rd 1L 2.3Y

VG85 Brurob Stchief Dot 1L 2.1Y

### RICHARD HULL

EX-90-1E Murrbrook Diamond Vera-ET 3 Lact.

VG87 Eclipse Moovin Jordy August-ET-RED 1L 2.6Y

VG86 Eclipse Jagger Unstop Princess Iii-ET 1L 2.2Y

VG86 Eclipse Jordy Mae Rc 1L 2.8Y

VG86 Eclipse Moovin D7 Princess I-ET 1L 2.5Y

VG86 Eclipse Moovin U Mae Ii-ET 1L 2.9Y

VG86 Eclipse Perennial T August 1L 2.6Y

VG86 Lightning Ridge Wv Moovin Camomile-ET-RED 1L 3.0Y

VG85 Eclipse Frazz Princess 1L 2.10Y

VG85 Eclipse Moovin Lambda Princess-ET 1L 2.9Y

VG85 Eclipse Royalcrush Aiko I-TWIN 1L 3.4Y

### JIBANTRA PARK HOLSTEINS

EX-91-1E Jibantra Park Lenux Gypsy 4 Lact.

VG87 Jibantra Park King Doc Eve 1L 2.6Y

VG85 Jibantra Park Arrow Eva 1L 2.6Y

VG85 Jibantra Park Arrow Poppy 1L 2.6Y

VG85 Jibantra Park Arrow Randell 2 1L 2.1Y

VG85 Jibantra Park Eugenio Jan 1L 2.2Y

VG85 Jibantra Park Lambda Julie 1L 2.2Y

VG85 Jibantra Park Lambda Panda 1L 2.2Y

### MANGARRA HOLDINGS TRUST

EX-90-1E The Points Goldenreams Flossy 6 Lact.

EX-90-2E Andes Damion Kelso 5 Lact.

### M & M MEYLAND

EX-91-4E Ashen Plains Brazzle Patricia 6 Lact.

EX-90-3E Eclipse Armani A Paradise-ET 6 Lact.

EX-90-2E Ashen Plains Aftershock Blossom 5 Lact.

VG85 Ashen Plains Radio Princess 1L 2.11Y





**PATRICK NICHOLSON**

EX-90-2E Andes Goldfarm Crissy 5 Lact.

**PEIRCE HOLSTEINS PTY LTD & ECLIPSE HOLSTEINS PTY LTD**

VG86 Eclipspeirce Moovin Cardigan-ET 1L 2.5Y  
 VG85 Eclipspeirce Aristocrat Aiko 1L 3.4Y

**ROCKMO FARM PTY LTD**

EX-90-1E Rockmo Doorman Miss 1-IMP-ET 6 Lact.  
 EX-90-1E Rockmo Rabo Deanne 6 Lact.

**D & N SMITH**

EX-90-1E Hightop Corvette Frostie-IMP-ET 5 Lact.

**GRAEME SPRUNT**

EX-90-1E Kaarmona Mvp Noni 16-CNF-DPF-XIF-BLF 3 Lact.  
 VG85 Kaarmona Cfp Carly 305-PC-CNF-DPF-BLF 1L 2.2Y  
 VG85 Kaarmona Fortnite Carly 295-CNF-DPF-BLF 1L 2.6Y  
 VG85 Kaarmona Lambda Carly 306-CNF-DPF-BLF 1L 2.2Y  
 VG85 Kaarmona Lambda Carly 308-CNF-DPF-BLF 1L 2.2Y

**B J & L M WREN**

EX-90-1E Wrenmac Mvp 2540 4 Lact.

**South Gippsland Victoria**

**E, A & R ATTENBOROUGH**

EX-91-3E Attaview Doorman Carly-ET-CNF-DPF-XIF-BLF 7 Lact.  
 EX-90-2E Attaview Shottle Sydney 8 Lact.

**DILEE HOLSTEINS**

EX-90-1E Dilee Cashjob 172-MFF-CNF-DPF-XIF-BLF 4 Lact.  
 EX-90-2E Dilee Supershot Ollie 961 5 Lact.  
 VG85 Dilee Cash 588-CNF-DPF-BLF 1L 2.6Y  
 VG85 Dilee Cash Ollie 551 Et-ET-CNF-DPF-BLF 1L 2.7Y  
 VG85 Dilee Cash Ollie 569-CNF-DPF-BLF 1L 2.7Y

**R K & S J GOODE**

EX-90-1E Boronia Glen Kingpin 1622 4 Lact.

**KOOKABURRA RIDGE HOLSTEINS**

EX-91-1E Kookaburra Ridge Galastar Bluesky 787 10 Lact.  
 EX-90-1E Kookaburra Ridge Sherac 906 10 Lact.  
 EX-90-1E Kookaburra Ridge Throttle 968 8 Lact.  
 EX-90-2E Kookaburra Ridge Vic 761 9 Lact.

**JOHNO SPARGO**

EX-90-2E Red Field Diamondback Frosty 3558-ET-MFF-CNF-DPF-XIF-BLF 4 Lact.

**JUSTIN STALEY**

EX-91-1E Aylesbury Shadow Jennyann 5 Lact.  
 EX-91-1E Aylesbury Vekis Lou 4 Lact.  
 EX-90-1E Eagle Ridge Elude F Polly-CNF-DPF-BLF 5 Lact.  
 EX-90-1E Paringa Windbrook Adelaide-IMP-ET 5 Lact.  
 EX-90-1E Town-View Impression Chrissy 8 Lact.  
 VG85 Avonlea-Yf Jacoby Connie-ET-CNF-DPF-BLF 1L 2.5Y

**MATTHEW TEMPLETON**

EX-90-2E View Fort Mogul Peacock 4 Lact.

**MATTHEW AND NICOLA TEMPLETON**

EX-92-2E Avonlea-Yf Goldwyn Cinnamin 2-ET 6 Lact.  
 EX-91-2E Avonlea Byway Ruby 2nd-ET 5 Lact.  
 EX-91-2E View Fort As Dottie 6 Lact.  
 EX-91-2E Willette Flame Alison-ET-MFF-CNF-DPF-XIF-BLF 5 Lact.  
 EX-90-1E Andes Rich Rose 2nd 4 Lact.  
 EX-90-1E View Fort Dealmaker Pansy 4 Lact.  
 EX-90-1E View Fort Gerold Robina 5 Lact.  
 EX-90-1E View Fort Lambda Jinx-TWIN 3 Lact.  
 EX-90-3E View Fort Pacific Marion 7 Lact.  
 EX-90-2E View Fort Medallion Pink 5 Lact.  
 VG85 Avonlea Solomon Ruth 2-ET-CNF-DPF-BLF 1L 2.6Y

**West Gippsland Victoria**

**JARRAH HOLSTEINS**

VG85 Jarrah Kingdoc Betty 1L 2.11Y

**MAXMOUNT HOLSTEINS**

EX-94-3E Lightning Ridge Cmd Isntshe Pretty-IMP-ET 5 Lact.  
 EX-90-1E Pegasus Diamondback Butter 4 Lact.  
 VG86 Maxmount Alum Lilac 1L 2.2Y

**Western District Victoria**

**MELISSA BREWER**

VG86 Melinger Tattoo Heidi 1L 3.0Y

**P J & C A CASTLES**

EX-90-1E Segenhoe Park Impression Rose 4 Lact.  
 EX-90-3E Camellia Grove Marshalls Catherine 6 Lact.  
 EX-90-2E Camellia Grove Dempsey Joane 7 Lact.  
 EX-90-2E Camellia Grove Jacot Dazzling-RED 4 Lact.  
 EX-90-2E Camellia Grove Windhammer Farwina 7 Lact.

**B J & J L DICKSON**

EX-91-1E Emu Banks Medallion 7449 8 Lact.  
 EX-90-1E Emu Banks Moneyman 9490-OC 4 Lact.  
 EX-90-1E Emu Banks Royalman 8253 6 Lact.  
 EX-90-2E Emu Banks Delta Centrepiece 8515-IMP-ET 5 Lact.  
 EX-90-2E Emu Banks Delta Centrepiece 8519-IMP-ET 5 Lact.

**FIRE LAKE FRIESIAN STUD**

EX-91-3E Fire Lake Jotan Lilac-RED 9 Lact.

**PETER H FULLERTON**

EX-90-1E Kentish Downs Cpordestone Pride 6 Lact.  
 EX-90-1E Murrbrook Doorman Lexi-ET 3 Lact.  
 EX-90-1E Warramont Kingboy Daybreak 13th-ET-MFF-CNF-DPF-XIF-BLF 4 Lact.

**L J & L J GUYETT**

EX-91-1E Fleyas Chief Lucky-CNF-DPF-XIF-BLF 3 Lact.  
 EX-90-1E Blossomvale Allan Ellie 7 Lact.

**N & C HALLYBURTON**

EX-90-1E Coomboona Maverick Liza 4 Lact.  
 EX-90-2E Coonara Scooby 5221 11 Lact.  
 EX-90-2E Windywarra Reginald Dana 9 Lact.

**S L & J L HUTH**

EX-90-1E Wiltina Goldfarm Sharni 4972 6 Lact.

**INSTYLE HOLSTEINS**

EX-93-2E Instyle Solomon Shower 4 Lact.  
 EX-92-1E Instyle Doc Amy 3 Lact.  
 EX-91-3E Murrbrook Windbrook Rochelle 5 Lact.  
 EX-91-2E Instyle Diamond Amy 6 Lact.  
 EX-91-2E Instyle Solomon Dahlia 4 Lact.  
 EX-90-1E Blossomvale Unix Joanne 3 Lact.  
 EX-90-1E Holloddon Halak Corrine 2443 6 Lact.  
 EX-90-1E Instyle Denver Sharee 3 Lact.  
 EX-90-1E Instyle Solomon Amy 3-ET 3 Lact.  
 EX-90-1E Instyle Solomon Sugar 3 Lact.  
 EX-90-3E Instyle Solomon Amy 5 Lact.  
 EX-90-2E Avonlea Stanleycup Carol 6 Lact.  
 EX-90-2E Instyle Diamond Bernita 4 Lact.  
 VG86 Instyle King Doc Rae-CNF-DPF-BLF 1L 2.4Y  
 VG85 Instyle Chief Sunspot 1L 2.4Y  
 VG85 Instyle Doc Lilly 1-ET 1L 2.2Y  
 VG85 Instyle Doc Lilly 5-ET 1L 2.2Y  
 VG85 Instyle Kingdoc Shimmer 1L 2.4Y  
 VG85 Instyle Master Justine 1L 2.6Y  
 VG85 Instyle Red Sunspot 1L 2.4Y  
 VG85 Instyle Royal Chassity-ET-CNF-DPF-BLF 1L 2.4Y  
 VG85 Instyle Stopping Dolly 1L 2.6Y  
 VG85 Instyle Tadoo Justine-ET-CNF-DPF-BLF 1L 2.8Y  
 VG85 Instyle Undenied Amy 2-ET-CNF-DPF-BLF 1L 2.4Y

**LINSAND FARMS PTY LTD**

EX-92-1E Linsand Windhammer Corona 4 Lact.  
 EX-91-2E Linsand Damion Ruby 2 4 Lact.  
 EX-91-2E Linsand Dempsey Steph 5 Lact.  
 EX-91-2E Linsand Dominic Corona 4 Lact.  
 EX-90-1E Avonlea Diamond Veronica-ET 3 Lact.  
 EX-90-1E Avonlea Tadoo Carla-ET 3 Lact.  
 EX-90-1E Linsand Carlos Pro 4 Lact.  
 EX-90-1E Linsand Dempsey Liberty 4 Lact.  
 VG85 Fairvale Meridian Josie 230 1L 3.7Y  
 VG85 Linsand Impression Tobi 2 1L 2.5Y  
 VG85 Linsand Mogul Precious 1L 2.7Y

**JASON AND RACHEL MUNGEAN**

EX-90-1E Burn-Brae Solomon Jane 4 Lact.

**P & M KERR FARMING PTY LTD**

EX-91-3E Rookery Baltimor Val 2 6 Lact.  
 EX-90-1E Ebony Park Let It Rain-ET 6 Lact.

**EUGENE REA**

EX-90-1E Childers Cove Brasilia Alexia 5 Lact.  
 EX-90-1E Childers Cove Crush Lara 5 Lact.

**S & R RICHARDSON**

EX-90-1E Hill View Fever Carmel 6 Lact.  
 VG86 Hill View Master Jane 1L 2.9Y

**RJ S HOLSTEIN**

EX-92-4E Mc Milk Dempsey Evelyn 6 Lact.  
 EX-92-2E Kearla A Apple Tiffany 5 Lact.

**JASON LEIGH SMITH**

VG85 Ja Dale Delta Lydia-ET-CNF-DPF-BLF 1L 2.4Y

**STEPHENS FAMILY**

EX-90-1E Fleyas Jacot Blush-RED 3 Lact.

**B C & L C TAYLOR**

EX-90-1E Taycrest Timboon Inga 3 Lact.  
 VG85 Taycrest Coorand Inga-TWIN-PO 1L 2.3Y

**M C & A L TAYLOR**

EX-92-2E Urramy Lodge Knight J51 8 Lact.  
 EX-91-1E Urramy Lodge Jess M28 5 Lact.  
 EX-91-1E Urramy Lodge P43 4 Lact.  
 EX-91-3E Glenorleigh Goldwyn Malin-ET 8 Lact.  
 EX-90-1E Avonlea Solomon Miriam 4 Lact.  
 EX-90-1E Urramy Lodge Latte Sasha M105-RED 5 Lact.

**JEFF VAN DIJK**

VG85 Van Dijk Moovin Lotto 1L 2.9Y

**DAVID WEEL**

EX-90-2E Southern Star Tonio 2-ET 8 Lact.  
 VG85 Blueprint Pharo Tonio 1L 3.4Y

**WESTMUIR HOLSTEINS**

EX-91-1E Westmuir Doc Bright-ET 3 Lact.  
 EX-90-1E Avonlea Diamond Pompeil-ET 5 Lact.  
 EX-90-1E Coomboona Doorman Madena-IMP-ET 3 Lact.  
 EX-90-1E Coomboona Mardigras Lilac 7 Lact.  
 EX-90-1E Lightning Ridge Wsmr Jacoby Barbie-IMP-ET 3 Lact.  
 EX-90-1E Murrbrook Solomon Robina-ET 3 Lact.  
 EX-90-1E Westmuir Solomon Mirade 5 Lact.  
 VG85 Parrabel Goldwyn Saturday-IMP-ET 1L 2.9Y  
 VG85 Westmuir Lr Avalanche Jasmine-IMP-ET 1L 2.3Y

**WHISKEY CREEK HOLSTEINS**

EX-90-1E Windy View Jacot Pauline-RED 4 Lact.  
 VG86 Whiskey Creek Tattoo Lilly 1L 2.5Y  
 VG85 Whiskey Creek Tailor Sanchez 1L 3.2Y

**A C WRIGHT**

EX-90-1E Eclipse Doorman Tabaret-ET 4 Lact.

**D V & V L WRIGHT**

EX-90-1E Atlast Wyman Kitty 5 Lact.  
 EX-90-2E Atlast Windbrook Ladylike 6 Lact.

# Holsteins tick the dairy beef boxes

**T**here are viable pathways to market for Holstein or Holstein cross calves that taste as good, or better, than traditional animals, according to recent research by Charles Sturt University.

Spanning almost five years, the Dairy Beef project was the largest trial in Australia to investigate the eating quality and path to market for dairy beef.

It involved growth studies at the University's research feedlot at Wagga Wagga and consumer sensory trials. More than 1,600 people tasted dairy beef samples, rating them for juiciness, tenderness, flavour and overall likeability. Professor Jane Quinn said the project was co-designed with dairy producers and industry experts.

"This study examined impacts of breed and production pathway on carcass specifications and eating quality of dairy beef," Professor Quinn said.

"The results showed there could be valuable and effective pathways to market for a Holstein or Holstein cross calf and that these calves produced a carcass that ate as well, if not better, than traditional beef animals, while meeting market specifications.

"There were some findings that need further work, including how to manage veal carcasses for optimal shelf life but there is always more work to be done."



Recent research found that Holstein or Holstein cross calves produced a carcass that ate as well, if not better, than traditional beef animals, while meeting market specifications. Photograph: DataGene

Professor Quinn outlined three impacts of the study, representing a win for dairy, a win for beef and a win for consumers.

Firstly, producers can have increased confidence that growing out male dairy calves to feedlot entry weight is a viable use of time and resources.

Secondly, there is now an identified, productive value chain to support producer decisions around male non-replacement calves.

And thirdly, consumers can be reassured

that both a high quality and high welfare meat product is produced.

"Most people don't think about how the meat they eat gets onto their plate, but this research was a great example of how we can meet high welfare, high production targets by utilising the production by-product (in the nicest sense) from another industry," she said.

The study was funded by Meat and Livestock Australia, Dairy Australia and industry partners.

HJ

## Advertisers' index

ABS.....	2
Agri-Gene.....	9
Alta.....	27
Genetics Australia.....	43
NZ Holsteins.....	10
Semex.....	44
WWS.....	4

## HOLSTEIN JOURNAL ADVERTISING

### Advertising enquiries:

phone Amanda Glossop on 0409 926 429 or email [aglossop@holstein.com.au](mailto:aglossop@holstein.com.au)

### Editorial enquiries:

phone Lee-Ann Monks on 0419 349 244, or e-mail [lmonks@monkscom.com.au](mailto:lmonks@monkscom.com.au)

### Deadlines: Autumn 2024 issue

Advertising bookings: Wednesday 28 February

Advertising material (copy for layout): Wednesday 28 February

Advertising material (finished artwork): Wednesday 6 March

Editorial contributions: Wednesday 28 February

(e-mailed to [lmonks@monkscom.com.au](mailto:lmonks@monkscom.com.au) or phone 0419 349 244)



# PEMBERTON and son

Australia's dynamic duo, production,  
 health, type with dairy strength



**CARENDA PEMBERTON A22** *Perseus x Jacey*

With over 350 milking daughters, PEMBERTON has emerged as one of Australia's most exciting, NEW Holstein. He is the complete total package...Production + Health + Type + A22 + Sustainability.



**CARENDA PEMBERTON BOBBYSUE GP-84**

*v. Pemberton*

**VARLEY, Australia's most popular and complete young bull, taking breeding to the next level.**

*From one of Australia's premier breeders, two-time Master Breeder Kitchens Farm Boyanup, WA.*



**CARENDA VARLEY A22**

*Pemberton x Superhero*



**CARENDA SUPERHERO**

**VERLO VG-86**

*Dam of Varley*



# GENERATION AFTER GENERATION

*We Are Genetics For Life*

## MB-LUCKYLADY BULLSEYE



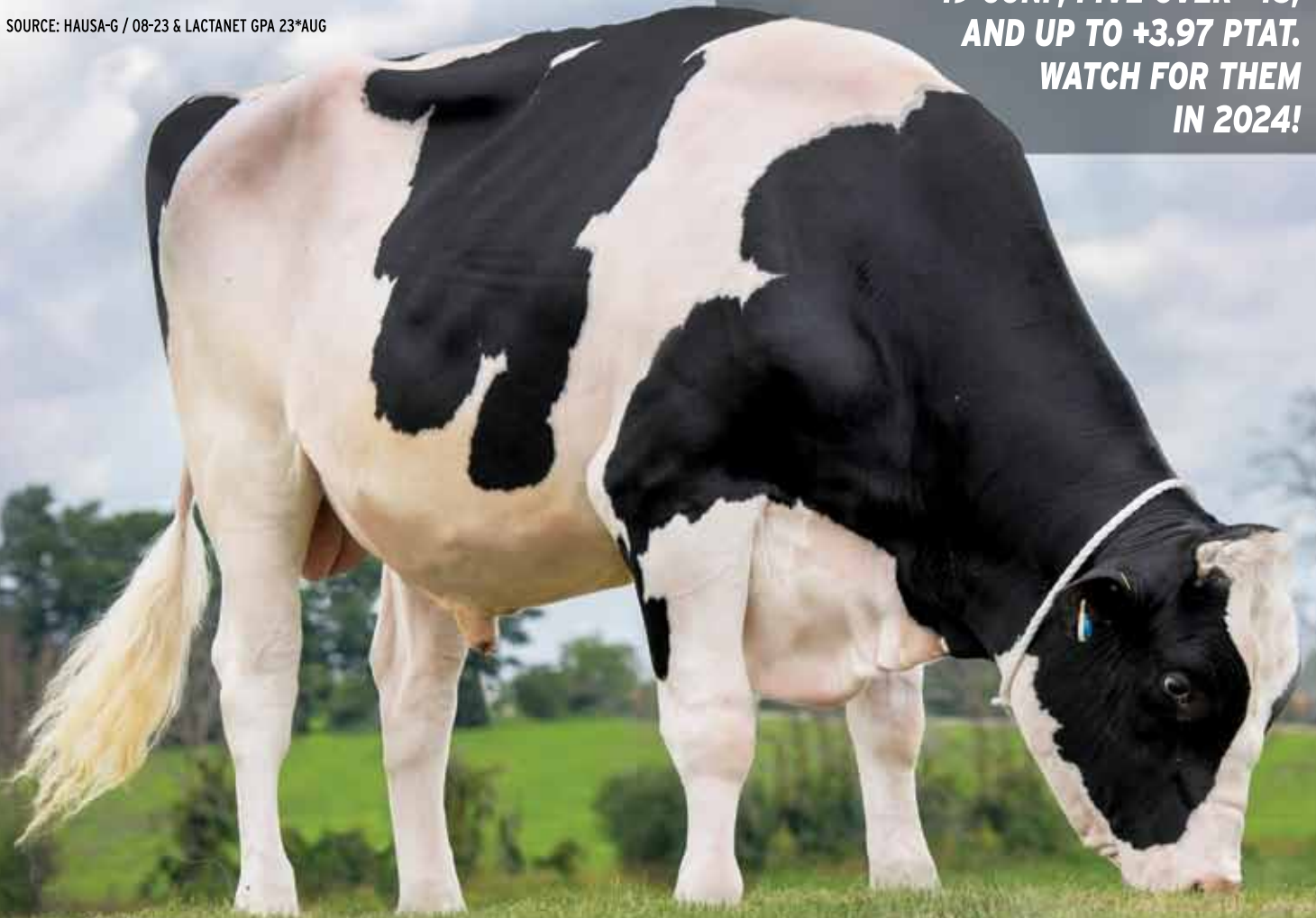
0200H012376

DELTA-LAMBDA x UNIX x DOORMAN

**+16 CONFORMATION +10 MAMMARY SYSTEM**  
**+11 F&L +14 Dairy Strength +9 Rump**  
**+3.12 PTAT +2.53 UDC**

SOURCE: HAUSA-G / 08-23 & LACTANET GPA 23\*AUG

**THERE'S A WAVE OF BULLSEYE SONS  
COMING TO SEMEX AS HIGH AS  
+19 CONF, FIVE OVER +18,  
AND UP TO +3.97 PTAT.  
WATCH FOR THEM  
IN 2024!**



Han Hopman



His Unix Dam & 3x WDE Winner  
**LADYROSE CAUGHT YOUR EYE EX-94/96-MS**

PHOTO: HAN HOPMAN & THE BULLVINE



“Our Bullseye daughters are high-style calves with hard tops, tremendous length throughout, and a big, open rib. I can see him being dominant in the show ring in the future.”  
Adam Zehr, Walnutlawn Farm

PHOTO: HOLLY MCFARLANE



[www.semex.com.au](http://www.semex.com.au)

